

# LORAIN COUNTY SHERIFF'S OFFICE

## 2011 ANNUAL JAIL REPORT



PHIL R. STAMMITTI  
SHERIFF

# 2011 JAIL DIVISION ANNUAL REPORT

## TABLE OF CONTENTS

### Section 1:

- ★ Annual Report Highlights

### Section 2:

- ★ Committing Agency Monthly Statistics
- ★ Committing Agency Yearly Statistics
- ★ Monthly Summary of Inmate Releases
- ★ Yearly Summary of Inmate Releases
- ★ Average Monthly Inmate Release Chart
- ★ Monthly Average Jail Daily Population
- ★ Yearly Average Jail Daily Population Chart

### Section 3:

- ★ Summary of Inmate Charges
- ★ Inmate Charges Comparison Charts
- ★ Ethnic Origin of Inmates
- ★ Ethnic Origin of Inmates Chart
- ★ Summary of Inmate Gender
- ★ Inmate Gender Chart

### Section 4:

- ★ Monthly Ordinance Fees
- ★ Ordinance Fees Generated Comparison Chart
- ★ Four Highest Ordinance Chart

### Section 5:

- ★ Facility Medical Actions
- ★ Facility Mental Health Actions
- ★ Inmate Medical Co-Pay Chart

### Section 6:

- ★ Summary of Yearly Jail Reports
- ★ Yearly Inmate Commissary Chart
- ★ Inmate Meals Served Chart
- ★ Monthly Telephone System
- ★ Inmate Telephone System Chart
- ★ Inmate Programs

### Section 7:

- ★ Monthly Lobby Activity
- ★ Yearly Work Release Funds Chart
- ★ Visitation
- ★ Inmate Visitation Chart



## 2011 ANNUAL REPORT HIGHLIGHTS

- ★ **Commitments Increased by 9% from 7,508 in 2010 to 7,600 in 2011.**
- ★ **State Charges Increased by 10% from 7,386 in 2010 to 7,417 in 2011.**
- ★ **Ordinance Charges Increased by 7% from 122 in 2010 to 183 in 2011.**
- ★ **Funds Generated from Ordinance Cases Increased by 10% from \$63,150 in 2010 to \$69,900 in 2011**
- ★ **Male Bookings Decreased by 9% from 5,925 in 2010 to 5,911 in 2011.**
- ★ **Female Bookings Increased by 11% from 1,583 in 2010 to 1,689 in 2011.**
- ★ **Felony Bookings Decreased by 10% from 3,371 in 2010 to 3,225 in 2011.**
- ★ **Misdemeanor Bookings Increased by 8% from 3,371 in 2010 to 4,291 in 2011.**
- ★ **Parole / Probation Violations Decreased by 8% from 106 in 2010 to 84 in 2011.**
- ★ **The Average Daily Inmate Population Increased by 1% from 391 in 2010 to 392 in 2011.**
- ★ **Inmate Releases Increased by 10% from 7,479 in 2010 to 7,569 in 2011.**
- ★ **Funds Generated by the Inmate Work Release Program Increased by 6% from \$5,418 in 2010 to \$9,396 in 2011.**
- ★ **Inmate Telephone Contributions Decreased by .09% from \$131,000 in 2010 to \$130,855 in 2011.**
- ★ **Continued Active Accreditation from the National Commission on Correctional Health Care.**



RESIDENTS COMMITTED TO THE LORAIN COUNTY JAIL BY  
VARIOUS AGENCIES, COURTS AND OTHERS MONTHLY TOTALS

**JANUARY 2011**

	FEDERAL		STATE		ORDINANCE		TOTAL	
	2010	2011	2010	2011	2010	2011	2010	2011
<b>ADULT PAR / PROB:</b>	0	<b>0</b>	24	<b>20</b>	0	<b>0</b>	24	<b>20</b>
<b>AMHERST:</b>	0	<b>0</b>	34	<b>31</b>	0	<b>1</b>	34	<b>32</b>
<b>AVON:</b>	0	<b>0</b>	11	<b>27</b>	0	<b>1</b>	11	<b>28</b>
<b>AVON LAKE:</b>	0	<b>0</b>	6	<b>12</b>	0	<b>0</b>	6	<b>12</b>
<b>COMMON PLEAS:</b>	0	<b>0</b>	128	<b>113</b>	0	<b>0</b>	128	<b>113</b>
<b>DOM. RELATIONS:</b>	0	<b>0</b>	11	<b>14</b>	0	<b>0</b>	11	<b>14</b>
<b>ELYRIA:</b>	0	<b>0</b>	91	<b>104</b>	1	<b>3</b>	92	<b>107</b>
<b>GRAFTON:</b>	0	<b>0</b>	3	<b>5</b>	0	<b>1</b>	3	<b>6</b>
<b>JUV COURT:</b>	0	<b>0</b>	5	<b>2</b>	0	<b>0</b>	5	<b>2</b>
<b>LAGRANGE:</b>	0	<b>0</b>	7	<b>5</b>	0	<b>0</b>	7	<b>5</b>
<b>LORAIN:</b>	0	<b>0</b>	108	<b>142</b>	3	<b>3</b>	111	<b>145</b>
<b>METRO PARKS:</b>	0	<b>0</b>	0	<b>1</b>	0	<b>0</b>	0	<b>1</b>
<b>N. RIDGEVILLE:</b>	0	<b>0</b>	14	<b>17</b>	0	<b>0</b>	14	<b>17</b>
<b>OBERLIN:</b>	0	<b>0</b>	9	<b>14</b>	0	<b>0</b>	9	<b>14</b>
<b>OTHER:</b>	0	<b>0</b>	5	<b>1</b>	0	<b>0</b>	5	<b>1</b>
<b>SHEFFIELD LAKE:</b>	0	<b>0</b>	5	<b>4</b>	0	<b>0</b>	5	<b>4</b>
<b>SHEFFIELD VILL:</b>	0	<b>0</b>	8	<b>10</b>	1	<b>1</b>	9	<b>11</b>
<b>SOUTH AMHERST:</b>	0	<b>0</b>	2	<b>0</b>	0	<b>0</b>	2	<b>0</b>
<b>SHERIFF:</b>	0	<b>0</b>	84	<b>105</b>	0	<b>0</b>	84	<b>105</b>
<b>STATE PATROL:</b>	0	<b>0</b>	47	<b>49</b>	0	<b>0</b>	47	<b>49</b>
<b>VERMILION:</b>	0	<b>0</b>	10	<b>5</b>	3	<b>0</b>	13	<b>5</b>
<b>WELLINGTON:</b>	0	<b>0</b>	8	<b>10</b>	2	<b>0</b>	10	<b>10</b>
<b>TOTAL:</b>	0	<b>0</b>	620	<b>691</b>	10	<b>10</b>	630	<b>701</b>

**PRIOR JANUARY TOTALS**

	Fed.	State	Ord.	Total
<b>2009:</b>	0	643	7	650
<b>2008:</b>	0	731	8	739
<b>2007:</b>	0	684	7	691
<b>2006:</b>	0	687	7	694
<b>2005:</b>	0	716	13	729
<b>2004:</b>	0	597	15	612
<b>2003:</b>	0	692	21	713
<b>2002:</b>	0	704	27	731
<b>2001:</b>	0	549	41	590
<b>2000:</b>	0	550	42	592



RESIDENTS COMMITTED TO THE LORAIN COUNTY JAIL BY  
VARIOUS AGENCIES, COURTS AND OTHERS MONTHLY TOTALS

FEBRUARY 2011

	FEDERAL		STATE		ORDINANCE		TOTAL	
	2010	2011	2010	2011	2010	2011	2010	2011
ADULT PAR / PROB:	0	0	9	17	0	0	9	20
AMHERST:	0	0	26	21	1	0	27	32
AVON:	0	0	17	11	0	0	17	28
AVON LAKE:	0	0	2	4	0	0	2	12
COMMON PLEAS:	0	0	165	88	0	0	165	113
DOM. RELATIONS:	0	0	20	13	0	0	20	14
ELYRIA:	0	0	74	82	0	1	74	107
GRAFTON:	0	0	4	0	0	0	4	6
JUV COURT:	0	0	6	4	0	0	6	2
LAGRANGE:	0	0	1	3	0	0	1	5
LORAIN:	0	0	108	116	11	8	119	145
METRO PARKS:	0	0	0	0	0	0	0	1
N. RIDGEVILLE:	0	0	6	15	0	0	6	17
OBERLIN:	0	0	9	11	0	0	1	14
OTHER:	0	0	1	1	0	0	1	1
SHEFFIELD LAKE:	0	0	6	5	0	0	6	5
SHEFFIELD VILL:	0	0	10	10	0	0	10	10
SOUTH AMHERST:	0	0	0	0	0	0	0	0
SHERIFF:	0	0	66	96	0	0	66	96
STATE PATROL:	0	0	65	51	0	0	65	51
VERMILION:	0	0	6	4	0	0	6	4
WELLINGTON:	0	0	4	6		0	4	6
<b>TOTAL:</b>	0	0	605	558	12	9	630	701

PRIOR FEBRUARY TOTALS

	Fed.	State	Ord.	Total
2009:	0	501	5	506
2008:	0	648	12	660
2007:	0	684	7	691
2006:	0	687	7	694
2005:	0	716	13	729
2004:	0	597	15	612
2003:	0	692	21	713
2002:	0	704	27	731
2001:	0	549	41	590
2000:	0	550	42	592



# RESIDENTS COMMITTED TO THE LORAIN COUNTY JAIL BY VARIOUS AGENCIES, COURTS AND OTHERS MONTHLY TOTALS

## MARCH 2011

	FEDERAL		STATE		ORDINANCE		TOTAL	
	2010	2011	2010	2011	2010	2011	2010	2011
ADULT PAR / PROB:	0	0	21	17	0	0	21	17
AMHERST:	0	0	35	23	1	2	36	25
AVON:	0	0	15	15	1	1	16	16
AVON LAKE:	0	0	4	7	0	0	4	7
COMMON PLEAS:	0	0	136	112	0	0	136	112
DOM. RELATIONS:	0	0	23	12	0	0	23	12
ELYRIA:	0	0	85	116	3	2	88	118
GRAFTON:	0	0	1	1	0	0	1	1
JUV COURT:	0	0	6	4	0	0	6	4
LAGRANGE:	0	0	6	3	0	0	6	3
LORAIN:	0	0	143	111	0	12	143	123
METRO PARKS:	0	0	0	1	0	0	0	1
N. RIDGEVILLE:	0	0	16	14	0	0	16	14
OBERLIN:	0	0	9	15	0	0	9	15
OTHER:	0	0	1	2	0	0	1	2
SHEFFIELD LAKE:	0	0	2	2	0	0	2	2
SHEFFIELD VILL:	0	0	9	9	3	0	12	9
SOUTH AMHERST:	0	0	2	1	0	0	2	1
SHERIFF:	0	0	92	119	0	0	92	119
STATE PATROL:	0	0	66	40	0	0	66	40
VERMILION:	0	0	3	3	0	2	3	5
WELLINGTON:	0	0	8	6	0	0	8	6
<b>TOTAL:</b>	0	0	683	633	8	19	691	652

## PRIOR MARCH TOTALS

	Fed.	State	Ord.	Total
2009:	0	660	12	672
2008:	0	700	13	713
2007:	0	684	7	691
2006:	0	687	7	694
2005:	0	716	13	729
2004:	0	597	15	612
2003:	0	692	21	713
2002:	0	704	27	731
2001:	0	549	41	590
2000:	0	550	42	592



# RESIDENTS COMMITTED TO THE LORAIN COUNTY JAIL BY VARIOUS AGENCIES, COURTS AND OTHERS MONTHLY TOTALS

## APRIL 2011

	FEDERAL		STATE		ORDINANCE		TOTAL	
	2010	2011	2010	2011	2010	2011	2010	2011
ADULT PAR / PROB:	0	0	21	17	0	0	21	17
AMHERST:	0	0	35	23	1	2	36	25
AVON:	0	0	15	15	1	1	16	16
AVON LAKE:	0	0	4	7	0	0	4	7
COMMON PLEAS:	0	0	136	112	0	0	136	112
DOM. RELATIONS:	0	0	23	12	0	0	23	12
ELYRIA:	0	0	85	116	3	2	88	118
GRAFTON:	0	0	1	1	0	0	1	1
JUV COURT:	0	0	6	4	0	0	6	4
LAGRANGE:	0	0	6	3	0	0	6	3
LORAIN:	0	0	143	111	0	12	143	123
METRO PARKS:	0	0	0	1	0	0	0	1
N. RIDGEVILLE:	0	0	16	14	0	0	16	14
OBERLIN:	0	0	9	15	0	0	9	15
OTHER:	0	0	1	2	0	0	1	2
SHEFFIELD LAKE:	0	0	2	2	0	0	2	2
SHEFFIELD VILL:	0	0	9	9	3	0	12	9
SOUTH AMHERST:	0	0	2	1	0	0	2	1
SHERIFF:	0	0	92	119	0	0	92	119
STATE PATROL:	0	0	66	40	0	0	66	40
VERMILION:	0	0	3	3	0	2	3	5
WELLINGTON:	0	0	8	6	0	0	8	6
<b>TOTAL:</b>	0	0	683	633	8	19	691	652

## PRIOR APRIL TOTALS

	Fed.	State	Ord.	Total
2009:	0	660	12	672
2008:	0	700	13	713
2007:	0	684	7	691
2006:	0	687	7	694
2005:	0	716	13	729
2004:	0	597	15	612
2003:	0	692	21	713
2002:	0	704	27	731
2001:	0	549	41	590
2000:	0	550	42	592



# RESIDENTS COMMITTED TO THE LORAIN COUNTY JAIL BY VARIOUS AGENCIES, COURTS AND OTHERS MONTHLY TOTALS

**MAY 2011**

	FEDERAL		STATE		ORDINANCE		TOTAL	
	2010	2011	2010	2011	2010	2011	2010	2011
<b>ADULT PAR / PROB:</b>	0	<b>0</b>	13	<b>11</b>	0	<b>0</b>	13	<b>11</b>
<b>AMHERST:</b>	0	<b>0</b>	23	<b>23</b>	0	<b>0</b>	23	<b>23</b>
<b>AVON:</b>	0	<b>0</b>	11	<b>13</b>	0	<b>0</b>	11	<b>13</b>
<b>AVON LAKE:</b>	0	<b>0</b>	8	<b>9</b>	0	<b>0</b>	8	<b>9</b>
<b>COMMON PLEAS:</b>	0	<b>0</b>	121	<b>108</b>	0	<b>0</b>	121	<b>108</b>
<b>DOM. RELATIONS:</b>	0	<b>0</b>	15	<b>12</b>	0	<b>0</b>	15	<b>12</b>
<b>ELYRIA:</b>	0	<b>0</b>	85	<b>96</b>	7	<b>3</b>	92	<b>99</b>
<b>GRAFTON:</b>	0	<b>0</b>	1	<b>2</b>	0	<b>0</b>	1	<b>2</b>
<b>JUV COURT:</b>	0	<b>0</b>	4	<b>3</b>	0	<b>0</b>	4	<b>3</b>
<b>LAGRANGE:</b>	0	<b>0</b>	6	<b>3</b>	0	<b>0</b>	6	<b>3</b>
<b>LORAIN:</b>	0	<b>0</b>	111	<b>134</b>	9	<b>20</b>	120	<b>154</b>
<b>METRO PARKS:</b>	0	<b>0</b>	2	<b>2</b>	0	<b>0</b>	2	<b>2</b>
<b>N. RIDGEVILLE:</b>	0	<b>0</b>	16	<b>11</b>	0	<b>0</b>	16	<b>11</b>
<b>OBERLIN:</b>	0	<b>0</b>	7	<b>18</b>	1	<b>0</b>	8	<b>18</b>
<b>OTHER:</b>	0	<b>0</b>	1	<b>0</b>	0	<b>0</b>	1	<b>0</b>
<b>SHEFFIELD LAKE:</b>	0	<b>0</b>	5	<b>3</b>	0	<b>0</b>	5	<b>3</b>
<b>SHEFFIELD VILL:</b>	0	<b>0</b>	9	<b>10</b>	1	<b>2</b>	10	<b>12</b>
<b>SOUTH AMHERST:</b>	0	<b>0</b>	1	<b>2</b>	0	<b>0</b>	1	<b>2</b>
<b>SHERIFF:</b>	0	<b>0</b>	79	<b>95</b>	0	<b>0</b>	79	<b>95</b>
<b>STATE PATROL:</b>	0	<b>0</b>	53	<b>47</b>	0	<b>0</b>	53	<b>47</b>
<b>VERMILION:</b>	0	<b>0</b>	3	<b>5</b>	0	<b>0</b>	3	<b>5</b>
<b>WELLINGTON:</b>	0	<b>0</b>	3	<b>7</b>	1	<b>0</b>	4	<b>7</b>
<b>TOTAL:</b>	0	<b>0</b>	577	<b>614</b>	19	<b>25</b>	596	<b>639</b>

## PRIOR MAY TOTALS

	Fed.	State	Ord.	Total
<b>2009:</b>	0	638	9	647
<b>2008:</b>	0	720	8	728
<b>2007:</b>	0	684	7	691
<b>2006:</b>	0	687	7	694
<b>2005:</b>	0	716	13	729
<b>2004:</b>	0	597	15	612
<b>2003:</b>	0	692	21	713
<b>2002:</b>	0	704	27	731
<b>2001:</b>	0	549	41	590
<b>2000:</b>	0	550	42	592





# RESIDENTS COMMITTED TO THE LORAIN COUNTY JAIL BY VARIOUS AGENCIES, COURTS AND OTHERS MONTHLY TOTALS

## JUNE 2011

	FEDERAL		STATE		ORDINANCE		TOTAL	
	2010	2011	2010	2011	2010	2011	2010	2011
ADULT PAR / PROB:	0	0	20	14	0	0	20	14
AMHERST:	0	0	15	34	0	0	15	34
AVON:	0	0	21	16	0	0	21	16
AVON LAKE:	0	0	13	8	0	0	13	8
COMMON PLEAS:	0	0	114	110	0	0	114	110
DOM. RELATIONS:	0	0	15	10	0	0	15	10
ELYRIA:	0	0	98	101	0	2	98	103
GRAFTON:	0	0	1	4	0	0	1	4
JUV COURT:	0	0	5	5	0	0	5	5
LAGRANGE:	0	0	1	4	0	0	1	4
LORAIN:	0	0	153	111	0	9	153	120
METRO PARKS:	0	0	0	1	0	0	0	1
N. RIDGEVILLE:	0	0	15	14	0	0	15	14
OBERLIN:	0	0	13	16	0	0	13	16
OTHER:	0	0	2	3	0	0	2	3
SHEFFIELD LAKE:	0	0	5	2	0	0	5	2
SHEFFIELD VILL:	0	0	7	13	0	0	7	13
SOUTH AMHERST:	0	0	0	1	0	0	0	1
SHERIFF:	0	0	66	74	0	0	66	74
STATE PATROL:	0	0	51	42	0	0	51	42
VERMILION:	0	0	3	3	0	7	3	10
WELLINGTON:	0	0	3	9	0	0	3	9
<b>TOTAL:</b>	0	0	621	595	0	18	621	613

## PRIOR JUNE TOTALS

	Fed.	State	Ord.	Total
2009:	0	769	9	778
2008:	0	663	3	666
2007:	0	684	7	691
2006:	0	687	7	694
2005:	0	716	13	729
2004:	0	597	15	612
2003:	0	692	21	713
2002:	0	704	27	731
2001:	0	549	41	590
2000:	0	550	42	592



RESIDENTS COMMITTED TO THE LORAIN COUNTY JAIL BY  
VARIOUS AGENCIES, COURTS AND OTHERS MONTHLY TOTALS

JULY 2011

	FEDERAL		STATE		ORDINANCE		TOTAL	
	2010	2011	2010	2011	2010	2011	2010	2011
ADULT PAR / PROB:	0	0	17	11	0	0	17	11
AMHERST:	0	0	28	27	0	0	28	27
AVON:	0	0	33	22	1	0	34	22
AVON LAKE:	0	0	15	10	0	0	15	10
COMMON PLEAS:	0	0	126	98	0	0	126	98
DOM. RELATIONS:	0	0	11	6	0	0	11	6
ELYRIA:	0	0	98	123	3	0	101	123
GRAFTON:	0	0	1	3	0	0	1	3
JUV COURT:	0	0	2	6	0	0	2	6
LAGRANGE:	0	0	3	5	0	0	3	5
LORAIN:	0	0	125	115	4	4	129	119
METRO PARKS:	0	0	2	4	0	0	2	4
N. RIDGEVILLE:	0	0	15	9	0	0	15	9
OBERLIN:	0	0	10	20	0	0	10	20
OTHER:	0	0	0	1	0	0	0	1
SHEFFIELD LAKE:	0	0	3	3	0	0	3	3
SHEFFIELD VILL:	0	0	8	13	0	1	8	14
SOUTH AMHERST:	0	0	2	0	0	0	2	0
SHERIFF:	0	0	59	84	0	0	59	84
STATE PATROL:	0	0	41	36	0	0	41	36
VERMILION:	0	0	4	1	1	0	5	1
WELLINGTON:	0	0	1	11	1	0	2	11
<b>TOTAL:</b>	0	0	604	608	10	5	614	613

PRIOR JULY TOTALS

	Fed.	State	Ord.	Total
2009:	0	705	20	725
2008:	0	691	9	700
2007:	0	684	7	691
2006:	0	687	7	694
2005:	0	716	13	729
2004:	0	597	15	612
2003:	0	692	21	713
2002:	0	704	27	731
2001:	0	549	41	590
2000:	0	550	42	592



**RESIDENTS COMMITTED TO THE LORAIN COUNTY JAIL BY  
VARIOUS AGENCIES, COURTS AND OTHERS MONTHLY TOTALS**

**AUGUST 2011**

	FEDERAL		STATE		ORDINANCE		TOTAL	
	2010	2011	2010	2011	2010	2011	2010	2011
<b>ADULT PAR / PROB:</b>	0	<b>0</b>	18	<b>17</b>	0	<b>0</b>	18	<b>17</b>
<b>AMHERST:</b>	0	<b>0</b>	22	<b>29</b>	0	<b>1</b>	22	<b>30</b>
<b>AVON:</b>	0	<b>0</b>	17	<b>17</b>	0	<b>1</b>	17	<b>18</b>
<b>AVON LAKE:</b>	0	<b>0</b>	11	<b>7</b>	0	<b>0</b>	11	<b>7</b>
<b>COMMON PLEAS:</b>	0	<b>0</b>	109	<b>126</b>	0	<b>0</b>	109	<b>126</b>
<b>DOM. RELATIONS:</b>	0	<b>0</b>	14	<b>13</b>	0	<b>0</b>	14	<b>13</b>
<b>ELYRIA:</b>	0	<b>0</b>	105	<b>122</b>	0	<b>2</b>	105	<b>124</b>
<b>GRAFTON:</b>	0	<b>0</b>	10	<b>6</b>	0	<b>0</b>	10	<b>6</b>
<b>JUV COURT:</b>	0	<b>0</b>	5	<b>6</b>	0	<b>0</b>	5	<b>6</b>
<b>LAGRANGE:</b>	0	<b>0</b>	0	<b>6</b>	0	<b>0</b>	0	<b>6</b>
<b>LORAIN:</b>	0	<b>0</b>	158	<b>124</b>	7	<b>19</b>	165	<b>143</b>
<b>METRO PARKS:</b>	0	<b>0</b>	2	<b>1</b>	0	<b>0</b>	2	<b>1</b>
<b>N. RIDGEVILLE:</b>	0	<b>0</b>	12	<b>19</b>	0	<b>0</b>	12	<b>19</b>
<b>OBERLIN:</b>	0	<b>0</b>	12	<b>13</b>	0	<b>0</b>	12	<b>13</b>
<b>OTHER:</b>	0	<b>0</b>	0	<b>3</b>	0	<b>0</b>	0	<b>3</b>
<b>SHEFFIELD LAKE:</b>	0	<b>0</b>	1	<b>5</b>	1	<b>0</b>	2	<b>5</b>
<b>SHEFFIELD VILL:</b>	0	<b>0</b>	4	<b>5</b>	0	<b>0</b>	4	<b>5</b>
<b>SOUTH AMHERST:</b>	0	<b>0</b>	1	<b>2</b>	0	<b>0</b>	1	<b>2</b>
<b>SHERIFF:</b>	0	<b>0</b>	106	<b>106</b>	0	<b>0</b>	106	<b>106</b>
<b>STATE PATROL:</b>	0	<b>0</b>	44	<b>24</b>	0	<b>0</b>	44	<b>24</b>
<b>VERMILION:</b>	0	<b>0</b>	8	<b>6</b>	0	<b>1</b>	8	<b>7</b>
<b>WELLINGTON:</b>	0	<b>0</b>	9	<b>7</b>	0	<b>0</b>	9	<b>7</b>
<b>TOTAL:</b>	0	<b>0</b>	668	<b>664</b>	8	<b>24</b>	676	<b>688</b>

**PRIOR AUGUST TOTALS**

	Fed.	State	Ord.	Total
<b>2009:</b>	0	716	8	724
<b>2008:</b>	0	647	7	654
<b>2007:</b>	0	684	7	691
<b>2006:</b>	0	687	7	694
<b>2005:</b>	0	716	13	729
<b>2004:</b>	0	597	15	612
<b>2003:</b>	0	692	21	713
<b>2002:</b>	0	704	27	731
<b>2001:</b>	0	549	41	590
<b>2000:</b>	0	550	42	592



# RESIDENTS COMMITTED TO THE LORAIN COUNTY JAIL BY VARIOUS AGENCIES, COURTS AND OTHERS MONTHLY TOTALS

## SEPTEMBER 2011

	FEDERAL		STATE		ORDINANCE		TOTAL	
	2010	2011	2010	2011	2010	2011	2010	2011
ADULT PAR / PROB:	0	0	23	14	0	0	23	14
AMHERST:	0	0	24	20	0	0	24	20
AVON:	0	0	25	19	1	0	26	19
AVON LAKE:	0	0	7	7	0	0	7	7
COMMON PLEAS:	0	0	113	117	0	0	113	117
DOM. RELATIONS:	0	0	12	7	0	0	12	7
ELYRIA:	0	0	93	105	1	5	94	110
GRAFTON:	0	0	2	2	0	0	2	2
JUV COURT:	0	0	6	5	0	0	6	5
LAGRANGE:	0	0	3	4	0	0	3	4
LORAIN:	0	0	134	115	1	11	135	126
METRO PARKS:	0	0	0	0	0	0	0	0
N. RIDGEVILLE:	0	0	10	18	0	0	10	18
OBERLIN:	0	0	17	7	0	0	17	7
OTHER:	0	0	3	1	0	0	3	1
SHEFFIELD LAKE:	0	0	4	5	0	0	4	5
SHEFFIELD VILL:	0	0	10	6	1	0	11	6
SOUTH AMHERST:	0	0	1	1	1	0	2	1
SHERIFF:	0	0	116	102	0	0	116	102
STATE PATROL:	0	0	48	38	0	0	48	38
VERMILION:	0	0	7	4	1	1	8	5
WELLINGTON:	0	0	5	10	0	0	5	10
<b>TOTAL:</b>	0	0	663	607	6	17	669	624

## PRIOR SEPTEMBER TOTALS

	Fed.	State	Ord.	Total
2009:	0	728	11	739
2008:	0	674	9	683
2007:	0	684	7	691
2006:	0	687	7	694
2005:	0	716	13	729
2004:	0	597	15	612
2003:	0	692	21	713
2002:	0	704	27	731
2001:	0	549	41	590
2000:	0	550	42	592



# RESIDENTS COMMITTED TO THE LORAIN COUNTY JAIL BY VARIOUS AGENCIES, COURTS AND OTHERS MONTHLY TOTALS

**OCTOBER 2011**

	FEDERAL		STATE		ORDINANCE		TOTAL	
	2010	2011	2010	2011	2010	2011	2010	2011
<b>ADULT PAR / PROB:</b>	0	0	18	13	0	0	18	13
<b>AMHERST:</b>	0	0	24	22	0	0	24	22
<b>AVON:</b>	0	0	18	21	0	0	18	21
<b>AVON LAKE:</b>	0	0	10	8	0	0	10	8
<b>COMMON PLEAS:</b>	0	0	98	88	0	0	98	88
<b>DOM. RELATIONS:</b>	0	0	9	16	0	0	9	16
<b>ELYRIA:</b>	0	0	104	84	0	6	104	90
<b>GRAFTON:</b>	0	0	0	2	0	0	0	2
<b>JUV COURT:</b>	0	0	3	3	0	0	3	3
<b>LAGRANGE:</b>	0	0	5	5	0	0	5	5
<b>LORAIN:</b>	0	0	139	125	6	4	145	129
<b>METRO PARKS:</b>	0	0	1	0	0	0	1	0
<b>N. RIDGEVILLE:</b>	0	0	7	15	0	0	7	15
<b>OBERLIN:</b>	0	0	7	14	0	0	7	14
<b>OTHER:</b>	0	0	0	2	0	0	0	2
<b>SHEFFIELD LAKE:</b>	0	0	7	0	0	0	7	0
<b>SHEFFIELD VILL:</b>	0	0	10	10	1	2	11	12
<b>SOUTH AMHERST:</b>	0	0	3	1	0	0	3	1
<b>SHERIFF:</b>	0	0	100	120	0	0	100	120
<b>STATE PATROL:</b>	0	0	64	44	0	0	64	44
<b>VERMILION:</b>	0	0	4	3	1	1	5	4
<b>WELLINGTON:</b>	0	0	3	5	0	0	3	5
<b>TOTAL:</b>	0	0	634	601	8	13	642	614

## PRIOR OCTOBER TOTALS

	Fed.	State	Ord.	Total
<b>2009:</b>	0	655	9	664
<b>2008:</b>	0	648	10	658
<b>2007:</b>	0	684	7	691
<b>2006:</b>	0	687	7	694
<b>2005:</b>	0	716	13	729
<b>2004:</b>	0	597	15	612
<b>2003:</b>	0	692	21	713
<b>2002:</b>	0	704	27	731
<b>2001:</b>	0	549	41	590
<b>2000:</b>	0	550	42	592



# RESIDENTS COMMITTED TO THE LORAIN COUNTY JAIL BY VARIOUS AGENCIES, COURTS AND OTHERS MONTHLY TOTALS

## NOVEMBER 2011

	FEDERAL		STATE		ORDINANCE		TOTAL	
	2010	2011	2010	2011	2010	2011	2010	2011
ADULT PAR / PROB:	0	0	23	6	0	0	23	6
AMHERST:	0	0	33	18	0	1	33	19
AVON:	0	0	20	17	0	0	20	17
AVON LAKE:	0	0	11	7	0	0	11	7
COMMON PLEAS:	0	0	88	116	0	0	88	116
DOM. RELATIONS:	0	0	14	22	0	0	14	22
ELYRIA:	0	0	88	101	1	4	89	105
GRAFTON:	0	0	3	4	0	0	3	4
JUV COURT:	0	0	6	2	0	0	6	2
LAGRANGE:	0	0	1	8	0	0	1	8
LORAIN:	0	0	137	130	2	3	139	133
METRO PARKS:	0	0	1	1	0	0	1	1
N. RIDGEVILLE:	0	0	16	9	0	0	16	9
OBERLIN:	0	0	9	8	0	0	9	8
OTHER:	0	0	0	1	0	0	0	1
SHEFFIELD LAKE:	0	0	7	4	0	0	7	4
SHEFFIELD VILL:	0	0	8	12	3	2	11	14
SOUTH AMHERST:	0	0	0	0	0	0	0	0
SHERIFF:	0	0	85	117	0	0	85	117
STATE PATROL:	0	0	42	52	0	0	42	52
VERMILION:	0	0	4	6	3	2	7	8
WELLINGTON:	0	0	3	1	0	0	3	1
<b>TOTAL:</b>	0	0	599	642	9	12	608	654

## PRIOR NOVEMBER TOTALS

	Fed.	State	Ord.	Total
2009:	0	541	101	642
2008:	0	546	10	556
2007:	0	684	7	691
2006:	0	687	7	694
2005:	0	716	13	729
2004:	0	597	15	612
2003:	0	692	21	713
2002:	0	704	27	731
2001:	0	549	41	590
2000:	0	550	42	592



RESIDENTS COMMITTED TO THE LORAIN COUNTY JAIL BY  
VARIOUS AGENCIES, COURTS AND OTHERS MONTHLY TOTALS

DECEMBER 2011

	FEDERAL		STATE		ORDINANCE		TOTAL	
	2010	2011	2010	2011	2010	2011	2010	2011
ADULT PAR / PROB:	0	0	19	16	0	0	19	16
AMHERST:	0	0	16	19	0	1	16	20
AVON:	0	0	17	17	0	1	17	18
AVON LAKE:	0	0	8	6	0	0	8	6
COMMON PLEAS:	0	0	93	70	0	0	93	70
DOM. RELATIONS:	0	0	4	12	0	0	4	12
ELYRIA:	0	0	66	104	2	3	68	107
GRAFTON:	0	0	3	1	0	0	3	1
JUV COURT:	0	0	1	12	0	0	1	12
LAGRANGE:	0	0	3	1	0	0	3	1
LORAIN:	0	0	100	120	1	2	101	122
METRO PARKS:	0	0	3	1	0	0	3	1
N. RIDGEVILLE:	0	0	14	21	0	1	14	22
OBERLIN:	0	0	9	14	0	0	9	14
OTHER:	0	0	0	0	0	0	0	0
SHEFFIELD LAKE:	0	0	6	2	0	1	6	3
SHEFFIELD VILL:	0	0	7	9	3	0	10	9
SOUTH AMHERST:	0	0	3	1	0	0	3	1
SHERIFF:	0	0	80	148	0	0	80	148
STATE PATROL:	0	0	46	46	0	0	46	46
VERMILION:	0	0	2	2	2	0	4	2
WELLINGTON:	0	0	4	5	0	0	4	5
<b>TOTAL:</b>	0	0	504	627	8	9	512	636

PRIOR DECEMBER TOTALS

Fed.	State	Ord.	Total
0	533	4	537
0	566	14	580
0	684	7	691
0	687	7	694
0	716	13	729
0	597	15	612
0	692	21	713
0	704	27	731
0	549	41	590
0	550	42	592



RESIDENTS COMMITTED TO THE LORAIN COUNTY JAIL BY  
VARIOUS AGENCIES, COURTS AND OTHERS YEARLY TOTALS

2011	FEDERAL		STATE		ORDINANCE		TOTAL	
	2010	2011	2010	2011	2010	2011	2010	2011
ADULT PAR / PROB:	0	0	220	170	0	0	220	170
AMHERST:	0	0	310	287	2	6	312	293
AVON:	0	0	223	213	5	4	228	217
AVON LAKE:	0	0	101	97	0	0	101	97
COMMON PLEAS:	0	0	1393	1253	0	0	1393	1253
DOM. RELATIONS:	0	0	168	151	0	0	168	151
ELYRIA:	0	0	1092	1229	30	32	1122	1261
GRAFTON:	0	0	29	33	0	1	29	34
JUV COURT:	0	0	52	57	0	0	52	57
LAGRANGE:	0	0	40	48	1	0	41	48
LORAIN:	0	0	1509	1440	51	112	1560	1552
METRO PARKS:	0	0	11	14	0	0	11	14
N. RIDGEVILLE:	0	0	158	175	0	1	158	176
OBERLIN:	0	0	120	159	1	0	121	159
OTHER:	0	0	14	15	0	0	14	15
SHEFFIELD LAKE:	0	0	55	41	1	1	56	42
SHEFFIELD VILL:	0	0	102	123	14	12	116	135
SOUTH AMHERST:	0	0	17	9	1	0	18	9
SHERIFF:	0	0	1032	1260	0	0	1032	1260
STATE PATROL:	0	0	623	516	0	0	623	516
VERMILION:	0	0	60	45	13	14	73	59
WELLINGTON:	0	0	57	82	3	0	60	82
<b>TOTAL:</b>	0	0	7,386	7,417	122	183	7,508	7,600

PRIOR YEARLY TOTALS

	Fed.	State	Ord.	Total
2009:	0	7,772	107	7,879
2008:	0	7,977	118	8,095
2007:	0	8,059	123	8,183
2006:	0	8,527	85	8,612
2005:	0	8,527	93	8,621
2004:	0	8,093	125	8,218
2003:	0	7,674	202	7,885
2002:	0	7,599	227	7,839
2001:	0	7,044	477	7,525





## MONTHLY SUMMARY OF INMATE RELEASES

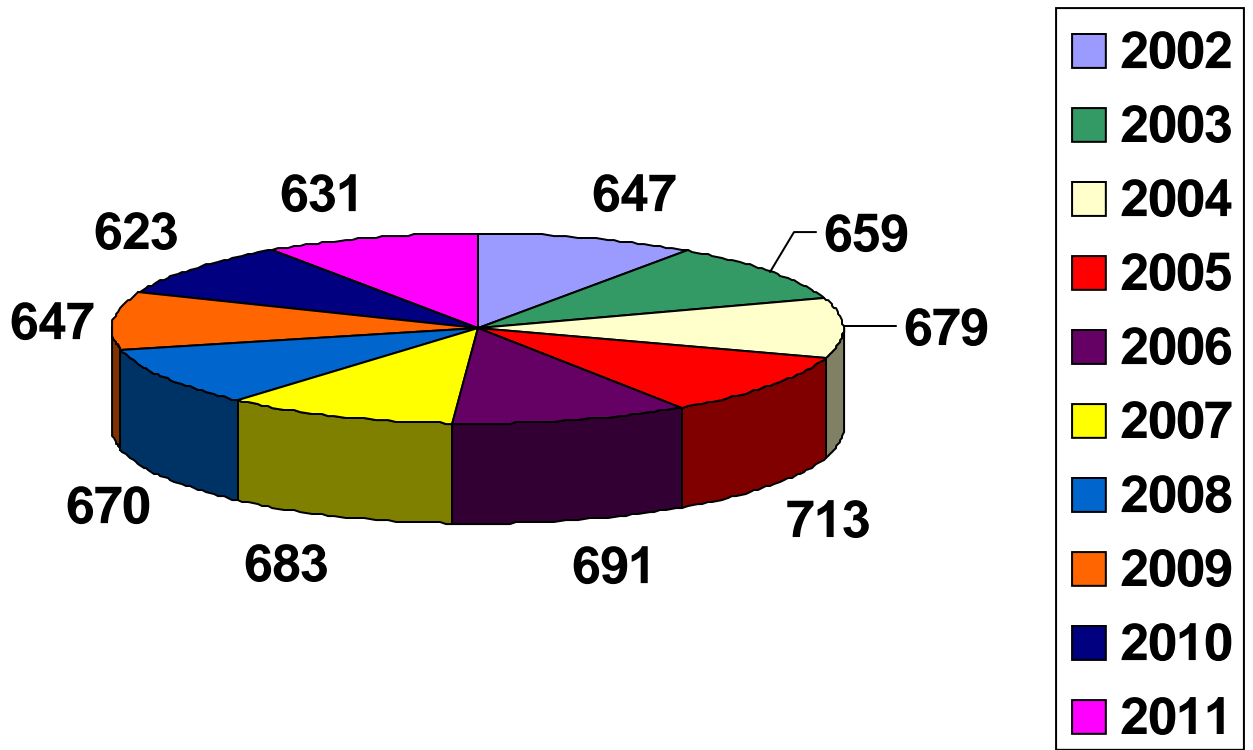
2011	<b>BOND POST.</b>	<b>TIME SERVED</b>	<b>STATE INST.</b>	<b>PROB. GRANT.</b>	<b>SENT. SUS.</b>	<b>NO PROS.</b>	<b>OTH. AGENCY</b>	<b>COURT ORD.</b>	<b>TOTAL</b>
<b>JANUARY:</b>	325	142	42	0	0	0	59	100	<b>668</b>
<b>FEBRUARY:</b>	285	130	42	0	0	0	27	92	<b>576</b>
<b>MARCH:</b>	360	115	60	1	0	1	25	92	<b>654</b>
<b>APRIL:</b>	337	130	49	2	0	0	29	80	<b>627</b>
<b>MAY:</b>	338	126	54	0	0	1	29	75	<b>623</b>
<b>JUNE:</b>	315	122	67	0	0	0	38	84	<b>626</b>
<b>JULY:</b>	316	110	44	0	0	0	40	73	<b>583</b>
<b>AUGUST:</b>	365	128	47	0	0	0	36	91	<b>667</b>
<b>SEPTEMBER:</b>	321	134	60	0	1	5	21	104	<b>646</b>
<b>OCTOBER:</b>	304	144	39	0	0	1	24	85	<b>597</b>
<b>NOVEMBER:</b>	368	138	27	0	0	0	27	89	<b>649</b>
<b>DECEMBER:</b>	357	134	39	0	0	0	42	81	<b>653</b>
<b>TOTAL:</b>	<b>3,991</b>	<b>1,553</b>	<b>570</b>	<b>3</b>	<b>1</b>	<b>8</b>	<b>397</b>	<b>1,046</b>	<b>7,569</b>

## YEARLY SUMMARY OF INMATE RELEASES

	<b>BOND POST.</b>	<b>TIME SERVED</b>	<b>STATE INST.</b>	<b>PROB. GRANT.</b>	<b>SENT. SUS.</b>	<b>NO PROS.</b>	<b>OTH. AGENCY</b>	<b>COURT ORD.</b>	<b>TOTAL</b>
<b>2010:</b>	3797	1530	698	2	0	3	354	1095	<b>7479</b>
<b>2009:</b>	3545	1758	786	6	2	4	326	1331	<b>7758</b>
<b>2008:</b>	3671	1851	883	4	3	24	331	1278	<b>8045</b>
<b>2007:</b>	3794	1645	1005	7	0	5	498	1250	<b>8204</b>
<b>2006:</b>	3788	1719	1102	9	7	22	516	1140	<b>8303</b>
<b>2005:</b>	4262	1572	966	12	2	9	501	1158	<b>8482</b>
<b>2004:</b>	3636	1628	1037	15	1	16	641	1147	<b>8121</b>
<b>2003:</b>	3301	1796	1135	56	3	24	493	1110	<b>7918</b>
<b>2002:</b>	3193	1895	1091	68	1	38	394	1102	<b>7782</b>
<b>2001:</b>	3147	1531	1024	30	4	43	576	1165	<b>7520</b>
<b>2000:</b>	2729	1541	1047	36	14	23	317	1084	<b>6791</b>



# AVERAGE MONTHLY INMATE RELEASE CHART

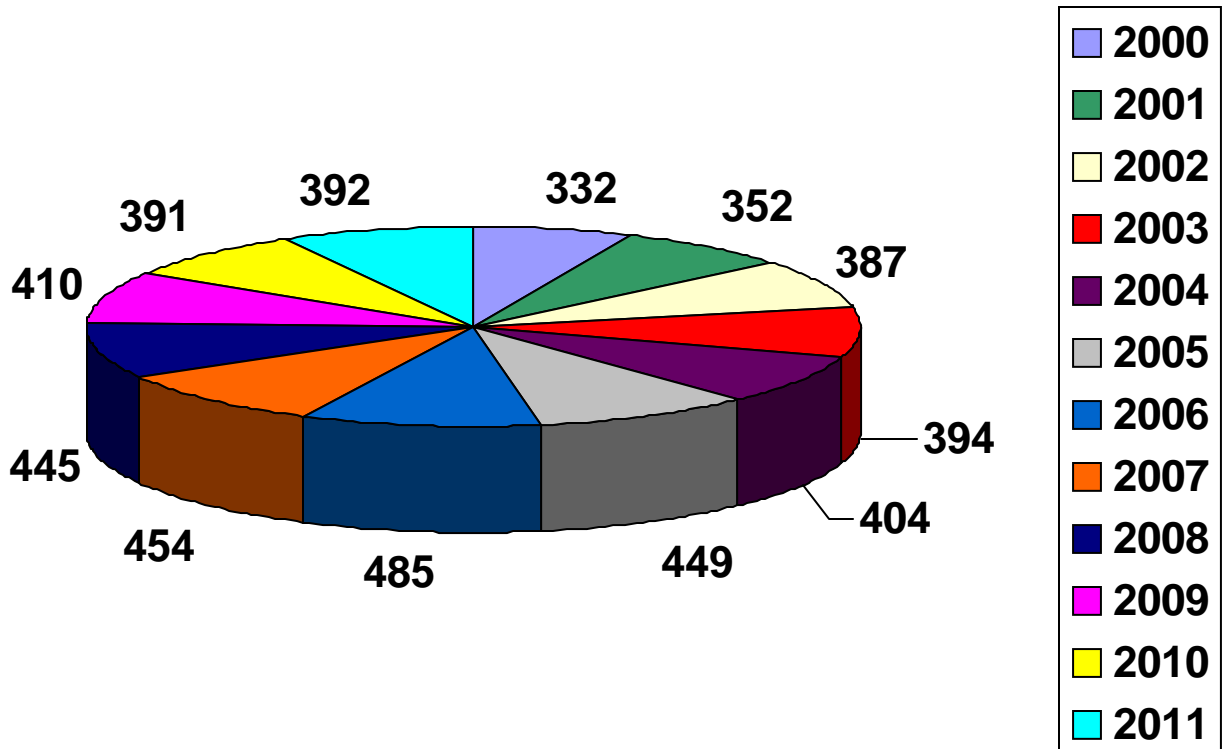


2002	2003	2004	2005	2006	2007	2008	2009	2010	2011
647	659	679	713	691	683	670	647	623	631

## MONTHLY AVERAGE JAIL DAILY POPULATION

	2007	2008	2009	2010	2011
<b>JANUARY:</b>	464	440	402	377	<b>399</b>
<b>FEBRUARY:</b>	451	437	388	382	<b>376</b>
<b>MARCH:</b>	442	445	397	387	<b>382</b>
<b>APRIL:</b>	455	447	402	395	<b>374</b>
<b>MAY:</b>	475	440	414	375	<b>380</b>
<b>JUNE:</b>	446	423	430	385	<b>357</b>
<b>JULY:</b>	433	452	435	394	<b>381</b>
<b>AUGUST:</b>	455	429	427	380	<b>417</b>
<b>SEPTEMBER:</b>	480	382	407	406	<b>418</b>
<b>OCTOBER:</b>	471	448	422	424	<b>398</b>
<b>NOVEMBER:</b>	432	425	421	409	<b>410</b>
<b>DECEMBER:</b>	418	405	371	380	<b>406</b>

## YEARLY AVERAGE JAIL DAILY POPULATION CHART



## SUMMARY OF INMATE CHARGES

2011	FELONY	MISDEMENOR	PAROLE / PROBATION
<b>JANUARY:</b>	313	384	4
<b>FEBRUARY:</b>	236	319	12
<b>MARCH:</b>	274	375	3
<b>APRIL:</b>	232	363	4
<b>MAY:</b>	267	368	4
<b>JUNE:</b>	249	357	7
<b>JULY:</b>	257	353	3
<b>AUGUST:</b>	323	355	10
<b>SEPTEMBER:</b>	259	356	9
<b>OCTOBER:</b>	249	357	8
<b>NOVEMBER:</b>	298	350	6
<b>DECEMBER:</b>	268	354	14
<b>TOTAL:</b>	<b>3225</b>	<b>4291</b>	<b>84</b>

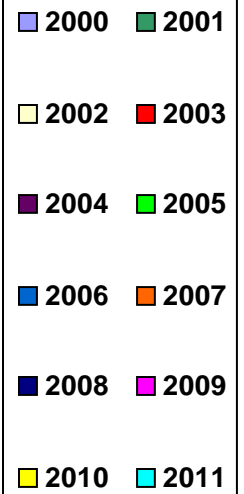
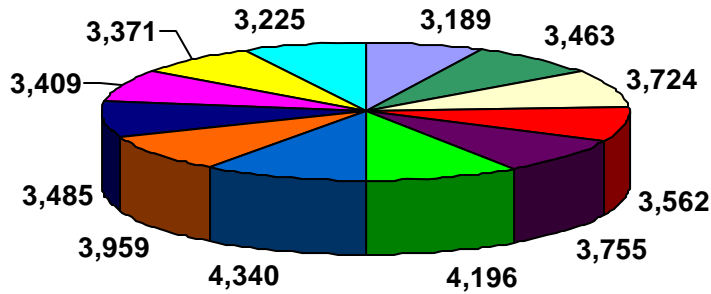
## PRIOR YEARLY TOTALS

	FELONY	MISDEMEANOR	PAROLE / PROBATION
<b>2009:</b>	3371	4031	106
<b>2008:</b>	3409	4372	98
<b>2007:</b>	3485	4494	116
<b>2006:</b>	3959	4105	121
<b>2005:</b>	4340	3942	92
<b>2004:</b>	4196	4299	126
<b>2003:</b>	3755	4286	177
<b>2003:</b>	3562	4094	239
<b>2002:</b>	3724	3963	152
<b>2001:</b>	3463	3974	91
<b>2000:</b>	3189	3497	54

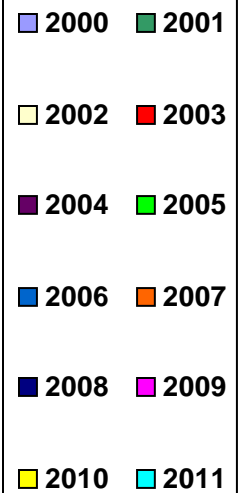
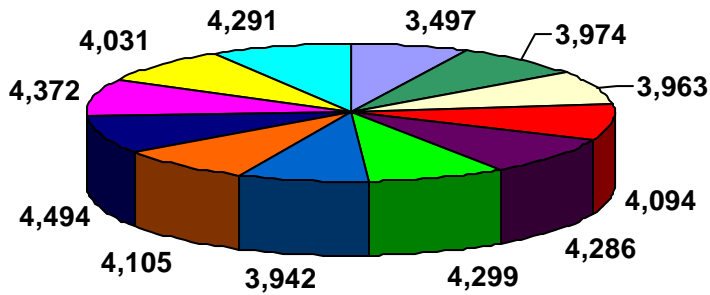


# INMATE CHARGES COMPARISON CHARTS

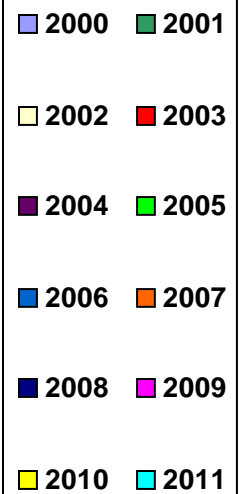
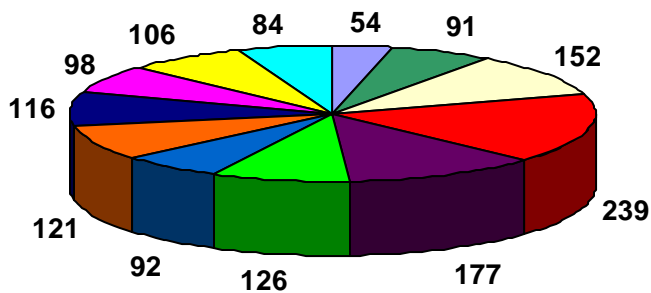
## FELONIES



## MISDEMEANORS



## PAROLE / PROBATION



## ETHNIC ORIGIN OF INMATES

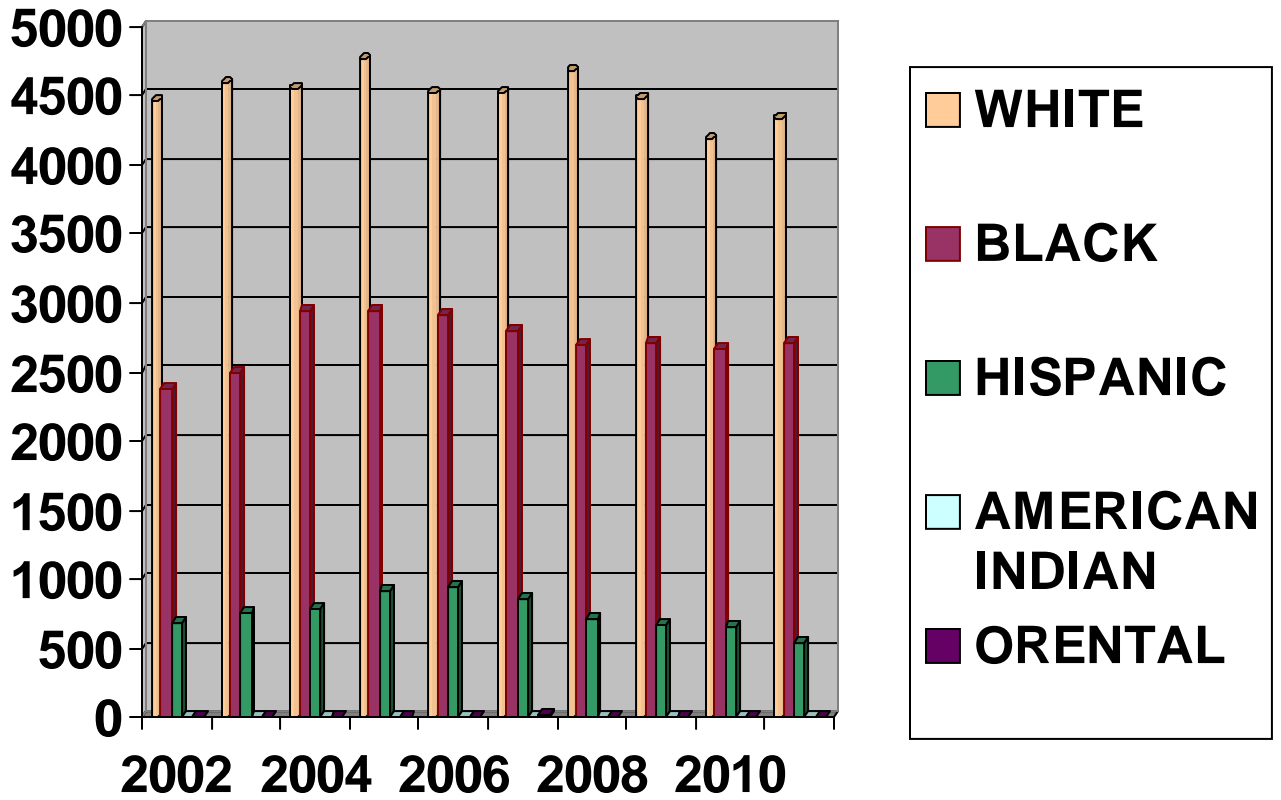
	<b>WHITE</b>	<b>BLACK</b>	<b>HISPANIC</b>	<b>AMERICAN INDIAN</b>	<b>ASIAN / ORIENTAL</b>
<b>JANUARY:</b>	384	266	51	0	0
<b>FEBRUARY:</b>	301	210	56	0	0
<b>MARCH:</b>	365	235	52	0	0
<b>APRIL:</b>	339	206	52	1	1
<b>MAY:</b>	349	239	49	1	1
<b>JUNE:</b>	349	224	38	1	1
<b>JULY:</b>	350	216	46	0	1
<b>AUGUST:</b>	398	254	32	2	2
<b>SEPTEMBER:</b>	386	196	41	1	0
<b>OCTOBER:</b>	368	206	40	0	0
<b>NOVEMBER:</b>	369	247	38	0	0
<b>DECEMBER:</b>	376	215	45	0	0
<b>TOTAL:</b>	<b>4334</b>	<b>2714</b>	<b>540</b>	<b>6</b>	<b>6</b>

## PRIOR TOTALS

	<b>WHITE</b>	<b>BLACK</b>	<b>HISPANIC</b>	<b>AMERICAN INDIAN</b>	<b>ASIAN / ORIENTAL</b>
<b>2010</b>	<b>4179</b>	<b>2661</b>	<b>652</b>	<b>5</b>	<b>11</b>
<b>2009</b>	<b>4478</b>	<b>2712</b>	<b>674</b>	<b>5</b>	<b>10</b>
<b>2008</b>	<b>4674</b>	<b>2700</b>	<b>715</b>	<b>1</b>	<b>5</b>
<b>2007</b>	<b>4515</b>	<b>2790</b>	<b>861</b>	<b>0</b>	<b>19</b>
<b>2006</b>	<b>4511</b>	<b>2907</b>	<b>943</b>	<b>2</b>	<b>11</b>
<b>2005</b>	<b>4758</b>	<b>2943</b>	<b>913</b>	<b>0</b>	<b>7</b>
<b>2004</b>	<b>4548</b>	<b>2537</b>	<b>788</b>	<b>6</b>	<b>6</b>
<b>2003</b>	<b>4586</b>	<b>2490</b>	<b>755</b>	<b>4</b>	<b>4</b>
<b>2002</b>	<b>4454</b>	<b>2377</b>	<b>690</b>	<b>3</b>	<b>1</b>



# ETHNIC ORIGIN OF INMATES CHART



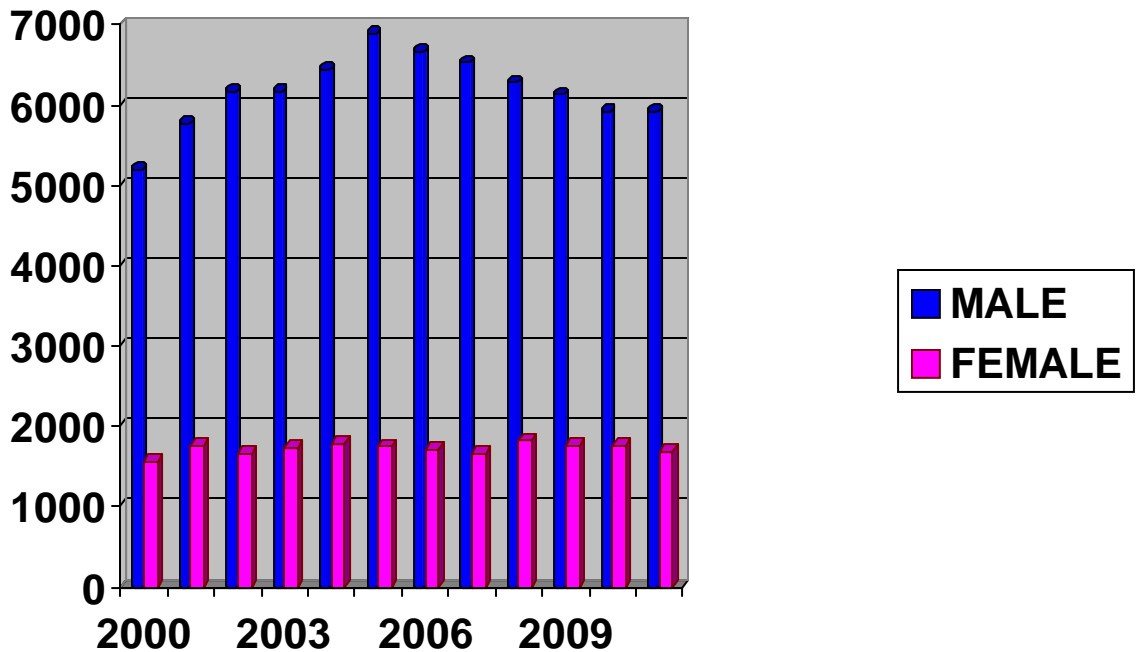
	2002	2003	2004	2005	2006	2007	2008	2009	2010	2011
<b>WHITE:</b>	4,334	4,586	4,548	4,758	4,511	4,515	4,674	4,478	4,179	4,334
<b>BLACK:</b>	2,377	2,490	2,537	2,943	2,907	2,790	2,700	2,712	2,661	2,714
<b>HISPANIC:</b>	690	755	788	913	943	861	715	674	652	540
<b>AM. INDIAN:</b>	3	4	6	0	2	0	1	5	5	6
<b>ASIAN / OR:</b>	1	4	6	7	11	19	5	10	11	6



## SUMMARY OF INMATE GENDER

	MALE		FEMALE	
	2010	2011	2010	2011
<b>JANUARY:</b>	505	<b>543</b>	125	<b>158</b>
<b>FEBRUARY:</b>	490	<b>448</b>	127	<b>119</b>
<b>MARCH:</b>	527	<b>514</b>	164	<b>138</b>
<b>APRIL:</b>	491	<b>471</b>	142	<b>128</b>
<b>MAY:</b>	469	<b>505</b>	127	<b>134</b>
<b>JUNE:</b>	500	<b>480</b>	121	<b>133</b>
<b>JULY:</b>	482	<b>482</b>	132	<b>131</b>
<b>AUGUST:</b>	522	<b>533</b>	154	<b>155</b>
<b>SEPTEMBER:</b>	526	<b>483</b>	142	<b>141</b>
<b>OCTOBER:</b>	518	<b>471</b>	124	<b>143</b>
<b>NOVEMBER:</b>	480	<b>488</b>	128	<b>166</b>
<b>DECEMBER:</b>	415	<b>493</b>	97	<b>143</b>
<b>TOTAL:</b>	5925	<b>5911</b>	1583	<b>1689</b>

## INMATE GENDER CHART



2000	2001	2002	2003	2004	2005	2006	2007	2008	2009	2010	2011
5,183	5,771	6,171	6,157	6,431	6,878	6,670	6,523	6,276	6,126	5,925	5,911
1,557	1,754	1,668	1,728	1,787	1,743	1,704	1,662	1,819	1,753	1,753	1,689

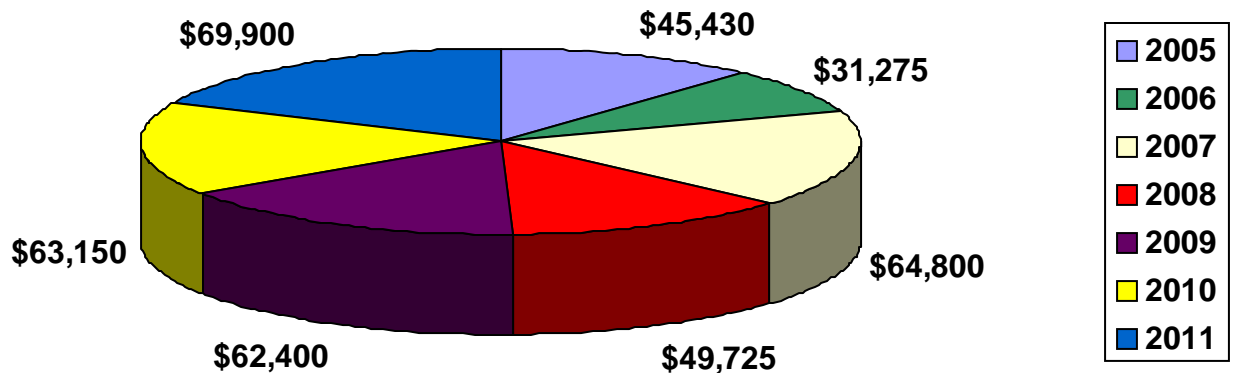




## MONTHLY ORDINANCE FEES

	2005	2006	2007	2008	2009	2010	2011
<b>JANUARY:</b>	\$5,590	\$3,975	\$3,450	\$5,025	\$3,900	\$8,700	<b>\$7,275</b>
<b>FEBRUARY:</b>	\$3,640	\$1,725	\$1,875	\$5,325	\$2,100	\$10,425	<b>\$5,175</b>
<b>MARCH:</b>	\$2,290	\$3,600	\$6,525	\$5,850	\$6,975	\$5,400	<b>\$3,450</b>
<b>APRIL:</b>	\$2,470	\$750	\$7,350	\$2,400	\$1,275	\$5,025	<b>\$5,475</b>
<b>MAY:</b>	\$3,965	\$4,125	\$6,375	\$5,625	\$2,325	\$3,525	<b>\$6,225</b>
<b>JUNE:</b>	\$3,575	\$1,275	\$5,250	\$3,525	\$10,050	\$4,950	<b>\$4,650</b>
<b>JULY:</b>	\$5,135	\$3,375	\$2,850	\$2,925	\$10,950	\$2,475	<b>\$6,900</b>
<b>AUGUST:</b>	\$1,885	\$5,775	\$2,325	\$3,375	\$2,025	\$6,225	<b>\$8,175</b>
<b>SEPTEMBER:</b>	\$1,625	\$3,450	\$7,800	\$3,825	\$3,675	\$8,175	<b>\$6,150</b>
<b>OCTOBER:</b>	\$6,175	\$675	\$9,300	\$5,175	\$4,800	\$2,625	<b>\$5,100</b>
<b>NOVEMBER:</b>	\$4,335	\$750	\$5,025	\$3,000	\$4,350	\$2,400	<b>\$6,450</b>
<b>DECEMBER:</b>	\$4,745	\$1,800	\$6,675	\$3,675	\$9,975	\$3,225	<b>\$4,875</b>
<b>TOTAL:</b>	\$45,430	\$31,275	\$64,800	\$49,725	\$62,400	\$63,150	<b>\$69,900</b>

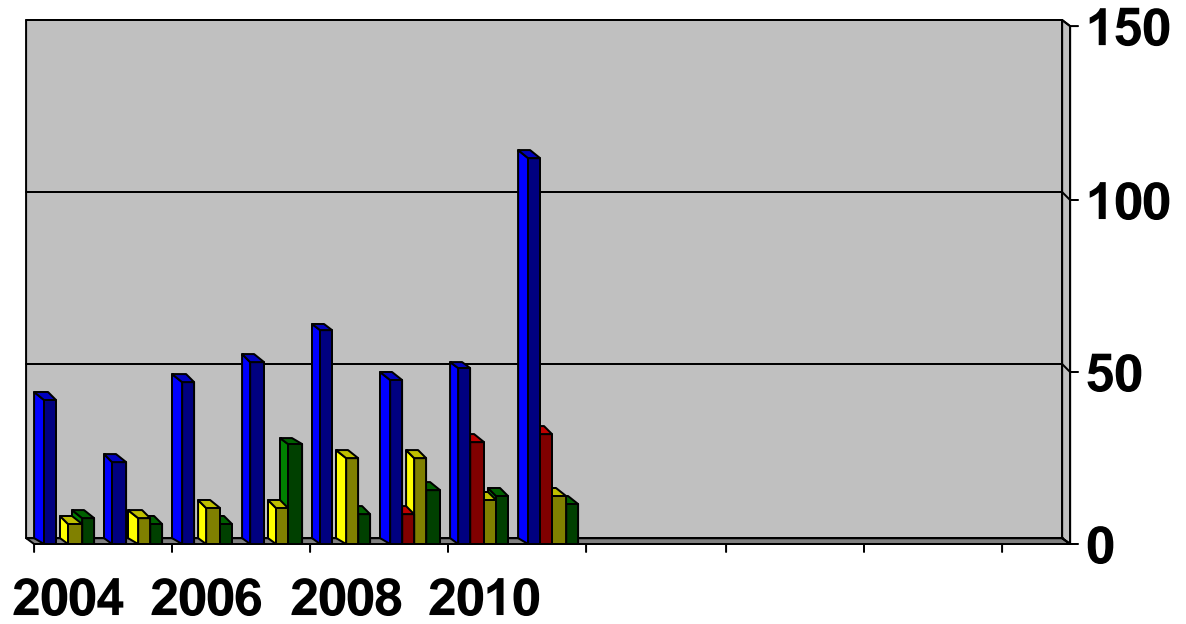
### ORDINANCE FEES GENERATED CHART



2005	2006	2007	2008	2009	2010	2011
\$45,430	\$31,275	\$64,800	\$49,725	\$62,400	\$63,150	\$69,900



# FOUR HIGHEST CONTRIBUTORS OF ORDINANCE CHART



■ Lorain 
 ■ Elyria 
 ■ Vermilion 
 ■ Sheffield

	2110	2011
Lorain:	51	112
Elyria:	30	32
Vermilion:	13	14
Sheffield:	14	12



## FACILITY MEDICAL ACTIONS

2011

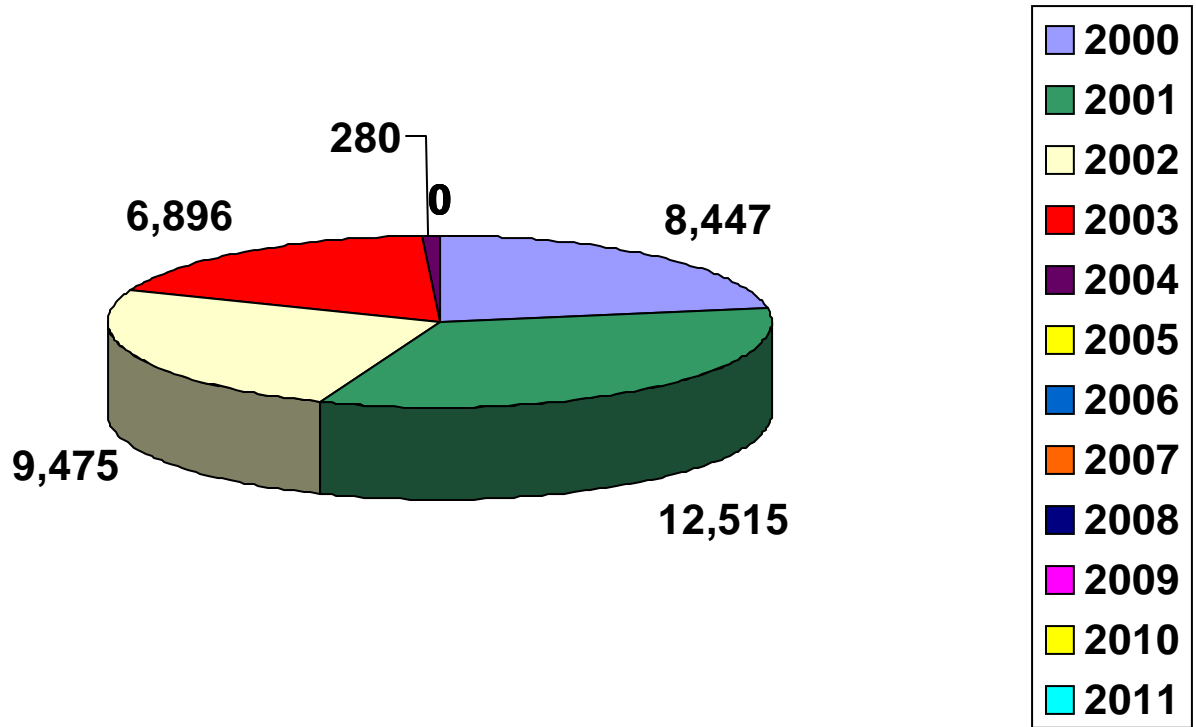
	MED. PASS	SICK CALL	PHY. EXAM	HOSP. ADM	MED. ORD.	FAC. DENT	FAC. DOC.	MED. INTAKE	TO E.R.	TEST OUT FAC.	TEST IN FAC.	OTC
JANUARY:	19,875	366	129	2	919	23	239	644	3	30	7,369	3,512
FEBRUARY:	16,448	251	107	0	726	21	206	509	0	33	7,215	2,752
MARCH:	20,381	390	115	1	886	15	241	574	1	28	7,515	3,195
APRIL:	18,773	347	97	2	899	14	170	534	4	21	6,903	3,078
MAY:	18,506	284	79	1	807	22	238	581	3	22	7,536	3,837
JUNE:	17,619	351	54	2	884	20	242	550	3	21	6,761	3,370
JULY:	19,908	337	97	0	804	12	234	565	0	23	7,413	3,352
AUGUST:	22,955	361	135	1	982	14	366	616	1	29	8,663	3,329
SEPTEMBER:	23,303	267	68	1	886	11	279	563	3	24	7,616	2,763
OCTOBER:	20,171	330	89	0	932	12	208	561	0	23	8,810	2,688
NOVEMBER:	19,850	389	93	1	943	15	285	602	3	12	8,698	2,617
DECEMBER:	19,238	350	108	0	849	5	266	578	0	30	9,065	2,160
<b>TOTAL:</b>	<b>237,027</b>	<b>4,023</b>	<b>1,171</b>	<b>11</b>	<b>10,517</b>	<b>184</b>	<b>2,974</b>	<b>6877</b>	<b>21</b>	<b>296</b>	<b>93,564</b>	<b>37,153</b>

## FACILITY MENTAL HEALTH ACTIONS

	IND. COUNS.	ASSESS.	COURT EVAL.	PSYCHOL	NORD EVAL.	ADMIT CPI	CRISIS INTER.	PSYCH.	THIRIP. REST.
JANUARY:	917	388	7	156	0	0	10	40	4
FEBRUARY:	865	319	5	142	0	0	8	37	6
MARCH:	937	321	3	169	0	0	12	48	7
APRIL:	859	321	3	164	1	1	5	42	8
MAY:	829	359	1	190	0	0	5	39	10
JUNE:	735	322	1	142	0	0	6	51	8
JULY:	946	347	0	186	0	0	6	28	8
AUGUST:	723	380	1	227	0	0	6	41	9
SEPTEMBER:	690	336	2	225	0	0	13	37	10
OCTOBER:	700	377	1	250	1	1	10	24	10
NOVEMBER:	655	389	2	182	1	1	4	16	14
DECEMBER:	619	367	2	211	0	0	4	55	8
<b>TOTAL:</b>	<b>9,475</b>	<b>4,226</b>	<b>28</b>	<b>2,244</b>	<b>3</b>	<b>3</b>	<b>89</b>	<b>458</b>	<b>102</b>



## INMATE MEDICAL CO-PAY CHART



2000	2001	2002	2003	2004	2005	2006	2007	2008	2009	2010	2011
\$8,447	\$12,515	\$9,475	\$6,896	\$280	0	0	0	0	0	0	0

Per the Ohio Revised Code sentenced inmates can be charged a moderate fee for medical services rendered to help defray the cost of medical care.

It should be noted that the decrease in medical co-pay is contributed to an elimination of certain fees that are not chargeable to inmates per the National Commission on Health Care Standards.

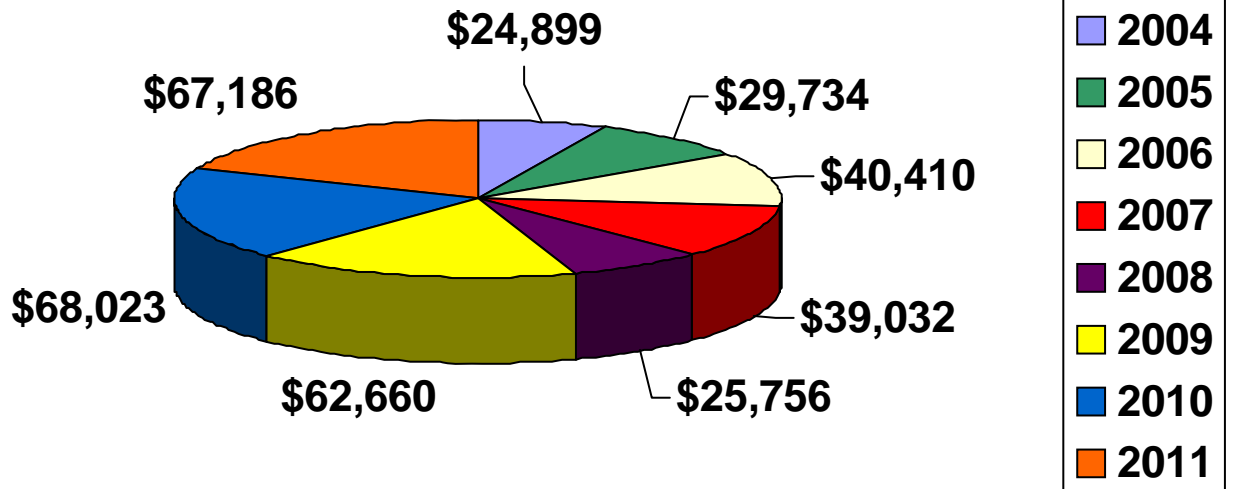


## SUMMARY OF YEARLY JAIL REPORTS

	<b>2007</b>	<b>2008</b>	<b>2009</b>	<b>2010</b>	<b>2011</b>
<b>ASSAULT ON INMATE:</b>	19	13	14	21	24
<b>ASSAULT ON STAFF:</b>	7	5	9	30	14
<b>ATTEMPTED SELF HARM:</b>					17
<b>ATTEMPTED SUICIDE</b>	4	11	4	1	7
<b>CREATING A DISTURBANCE:</b>					27
<b>DAMAGING PROPERTY:</b>					3
<b>DISRESPECTING STAFF:</b>					25
<b>DISRUPTING OPERATIONS:</b>					75
<b>ESCAPE RISK ADDITION:</b>	81	63	100	104	144
<b>FACILITY EVACUATION DRILL:</b>				7	8
<b>FACILITY INSPECTION:</b>				44	58
<b>FACILITY SEARCH:</b>	692	772	980	1050	1102
<b>FAILURE TO COMPLY:</b>					102
<b>FIGHTING:</b>	40	34	29	62	58
<b>IN CUSTODY DEATH:</b>					1
<b>INMATE ADMIN SEG:</b>	101	101	100	89	149
<b>INMATE INJURY:</b>	86	69	67	63	71
<b>INMATE LOG:</b>	804	821	775	604	598
<b>INTIMIDATION:</b>					3
<b>K9 DEPLOYMENT</b>					5
<b>K9 SEARCH:</b>				9	233
<b>KEY CHECK:</b>	45	48	51	41	50
<b>KICKING &amp; POUND. ON CELL:</b>					23
<b>MEDICAL TRANSPORT:</b>					13
<b>MISUSE OF MEDICATION:</b>					5
<b>OFFICER INJURY:</b>	24	15	10	19	9
<b>OTHER / MISCELLANEOUS:</b>	287	236	236	630	177
<b>PHYS. CONT. WITH AN OFFICER:</b>					5
<b>PHYS. CONT. WITH AN INMATE:</b>					1
<b>POSESSION CONTRABAND:</b>					51
<b>SELF MUTILATION /TATTOO'S:</b>					7
<b>SMOKING:</b>					7
<b>STARTING FIRES:</b>					5
<b>STEALING:</b>					10
<b>THREAT. STAFF / INMATE:</b>					38
<b>TOTAL:</b>	<b>2190</b>	<b>2188</b>	<b>2375</b>	<b>2774</b>	<b>3125</b>



## YEARLY INMATE COMMISSARY CHART



2004	2005	2006	2007	2008	2009	2010	2011
\$24,899	29,734	\$40,410	\$39,032	\$25,756	\$62,660	\$68,023	\$67.186

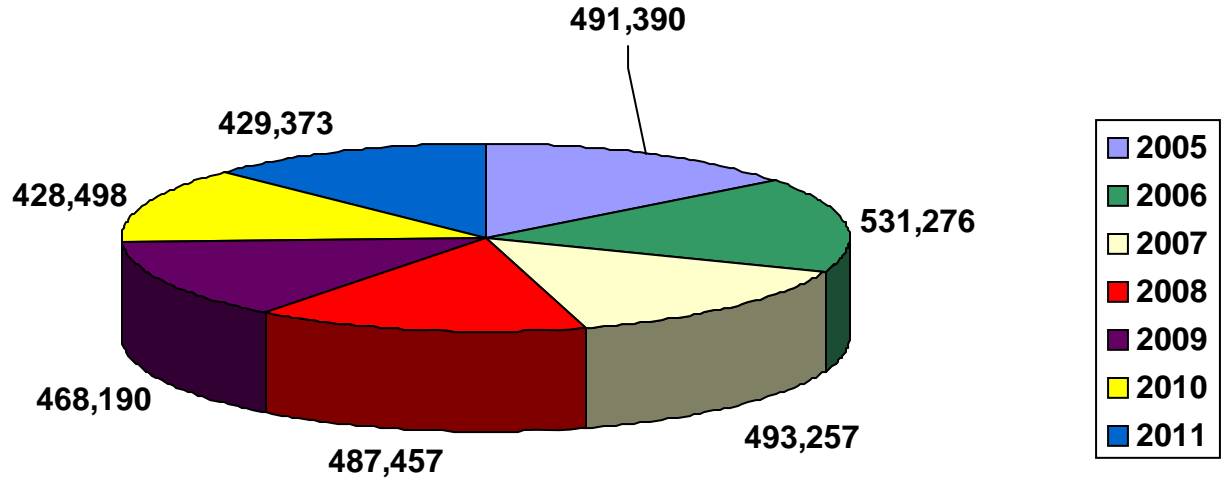
The Lorain County Sheriff's Office has contracted ARAMARK Food Services to provide commissary to the inmate population. Inmates are permitted to purchase hygiene, writing, food items and other approved products. The Sheriff's Office earns 22% commission of the total items purchased weekly.

Per the Ohio Revised Code profits forwarded to the Lorain County Sheriff's Office must be placed into a special inmate welfare and recreational account. Expenditures from the inmate welfare and recreational account may only be allocated for items that solely and directly benefit the inmate population.

Items routinely purchased from this account include: Televisions, exercise equipment, recreational equipment, hair clippers and educational aids.



# INMATE MEALS SERVED CHART



2005	2006	2007	2008	2009	2010	2011
491,390	531,276	493,257	487,457	468,190	428,498	429,373

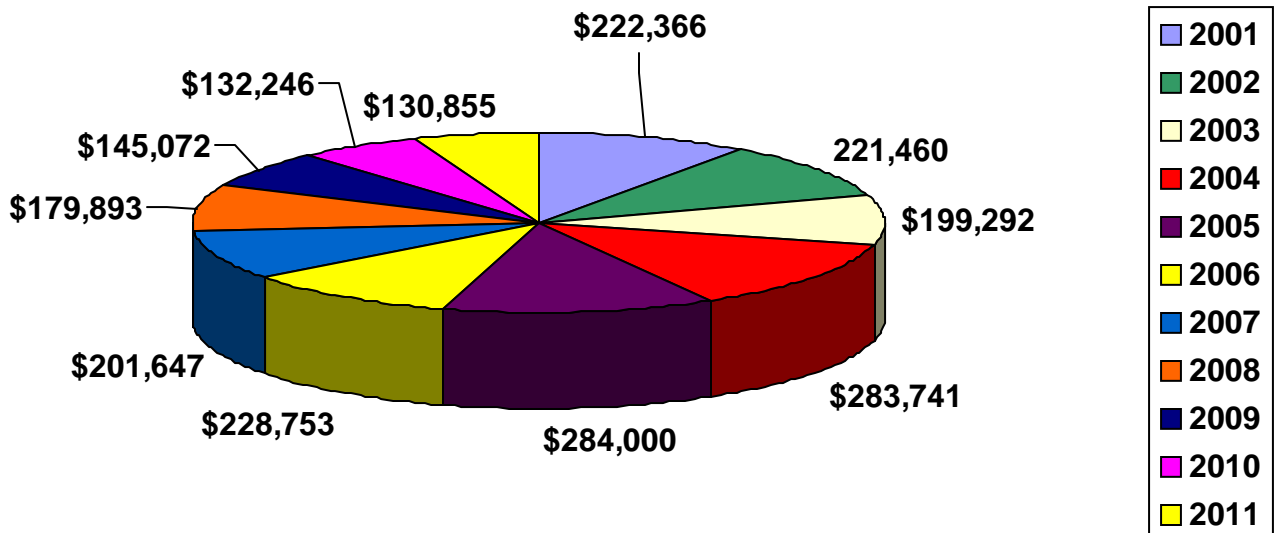


## INMATE TELEPHONE SYSTEM

Calls, Minutes, Revenue, and Commission Paid to the Lorain County  
General Fund

	TOTAL CALLS	TOTAL MINUTES	REVENUE	COMMISSION
<b>JANUARY:</b>	4,745	43,133	\$28,805.93	\$12,674.61
<b>FEBRUARY:</b>	4,588	45,674	\$28,415.79	\$12,502.95
<b>MARCH:</b>	4,213	40,225	\$24,778.14	\$10,902.38
<b>APRIL:</b>	4,630	45,691	\$27,034.65	\$11,895.25
<b>MAY:</b>	4,202	36,469	\$23,748.90	\$10,449.52
<b>JUNE:</b>	3,404	31,806	\$19,565.34	\$8,608.75
<b>JULY:</b>	3,565	34,407	\$20,767.33	\$9,137.63
<b>AUGUST:</b>	4,451	43,533	\$25,997.16	\$11,438.75
<b>SEPTEMBER:</b>	4,308	43,695	\$25,122.50	\$11,053.90
<b>OCTOBER:</b>	3,929	39,156	\$22,696.89	\$9,986.63
<b>NOVEMBER:</b>	4,581	42,881	\$25,341.23	\$11,150.14
<b>DECEMBER:</b>	4,367	43,107	\$25,123.75	\$11,054.45
<b>TOTAL:</b>	<b>50,983</b>	<b>489,777</b>	<b>\$297,397.61</b>	<b>\$130,854.96</b>

## INMATE TELEPHONE SYSTEM CHART





## INMATE PROGRAMS

	<b>2006</b>	<b>2007</b>	<b>2008</b>	<b>2009</b>	<b>2010</b>	<b>2011</b>
<b>NEW BEGINNINGS:</b>	564	203	203	399	402	<b>413</b>
<b>STRESS &amp; ANGER:</b>	416	185	185	304	478	<b>259</b>
<b>LACADA - FEMALES:</b>	1352	1540	1540	2033	2002	<b>1847</b>
<b>LACADA - MALES:</b>	734	976	976	945	2236	<b>1822</b>
<b>GED - FEMALES:</b>	395	375	375	370	10	<b>0</b>
<b>GED - MALES:</b>	402	386	386	386	25	<b>0</b>
<b>CHURCH - FEMALES:</b>	845	797	797	800	820	<b>825</b>
<b>CHURCH - MALES:</b>	3722	3652	3652	3652	3690	<b>3688</b>
<b>COUNSELING GROUP:</b>	25	20	20	20	18	<b>0</b>
<b>TOTAL:</b>	9195	8804	8804	10362	10786	<b>8854</b>

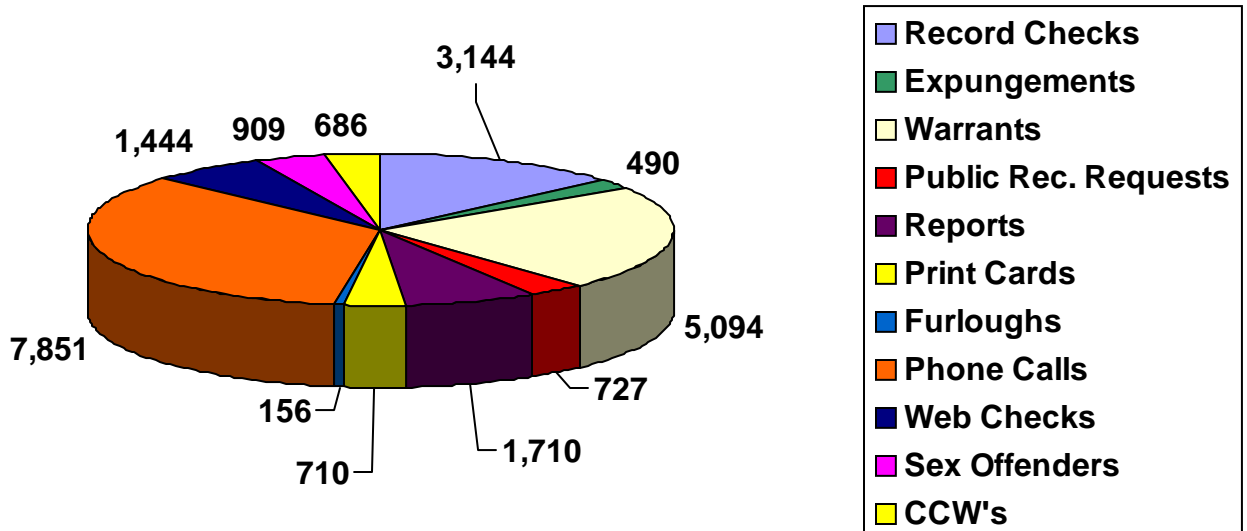


# MONTHLY LOBBY ACTIVITY

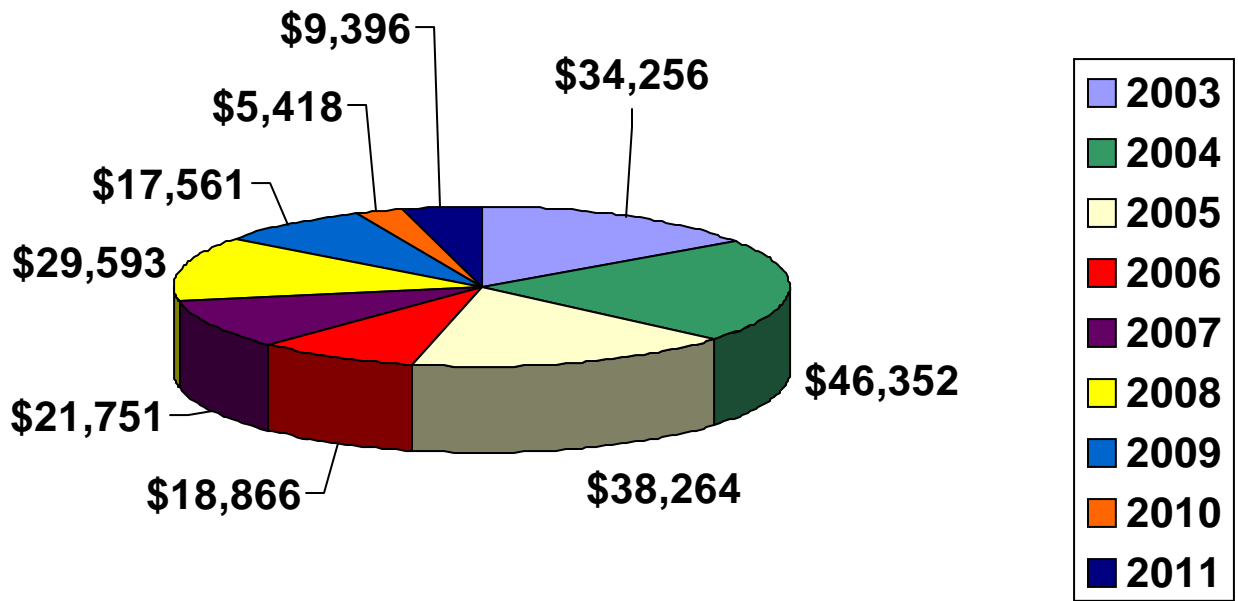
JUNE - DECEMBER 2011

	RECORD CHECKS	EXPUNGE.	WARR.	PUB. REC. REQUESTS	REPORTS	PRINT CARDS	FURL.	PHONE CALLS	WEB CHECKS	SEX OFFEND.	CCW'S
JAN:											
FEB:											
MARCH:											
APRIL:											
MAY:											
JUNE:	526	116	990	210	313	197	120	1,888	287	158	319
JULY:	535	116	655	60	252	94	60	1,471	237	163	85
AUGUST:	528	36	808	31	209	156	32	1,554	345	202	83
SEPT:	366	67	731	49	200	98	25	791	251	157	53
OCT:	626	35	1,144	106	297	42	34	1,613	234	150	94
NOV:	511	112	1,272	365	529	115	4	1,179	225	144	77
DEC:	587	44	1,292	253	432	205	33	2,088	210	137	58
<b>TOTAL:</b>	<b>3,144</b>	<b>490</b>	<b>5,094</b>	<b>727</b>	<b>1,710</b>	<b>710</b>	<b>156</b>	<b>7,851</b>	<b>1,444</b>	<b>909</b>	<b>686</b>

## LOBBY ACTIVITY CHART



## INMATE WORK RELEASE CHART



2003	2004	2005	2006	2007	2008	2009	2010	2011
\$34,256	\$46,352	\$38,264	\$18,866	\$21,751	\$29,593	\$17,561	\$5,418	\$9,396

Inmates sentenced to the work release program are permitted to maintain their employment by being allowed to leave the facility for scheduled work. Inmates are randomly checked by jail staff to assure they are at their place of employment .

Inmates who are accepted into the work release program are required to pay one hours wage per day to the Lorain County Sheriff's Office to help defray the cost of their incarceration.

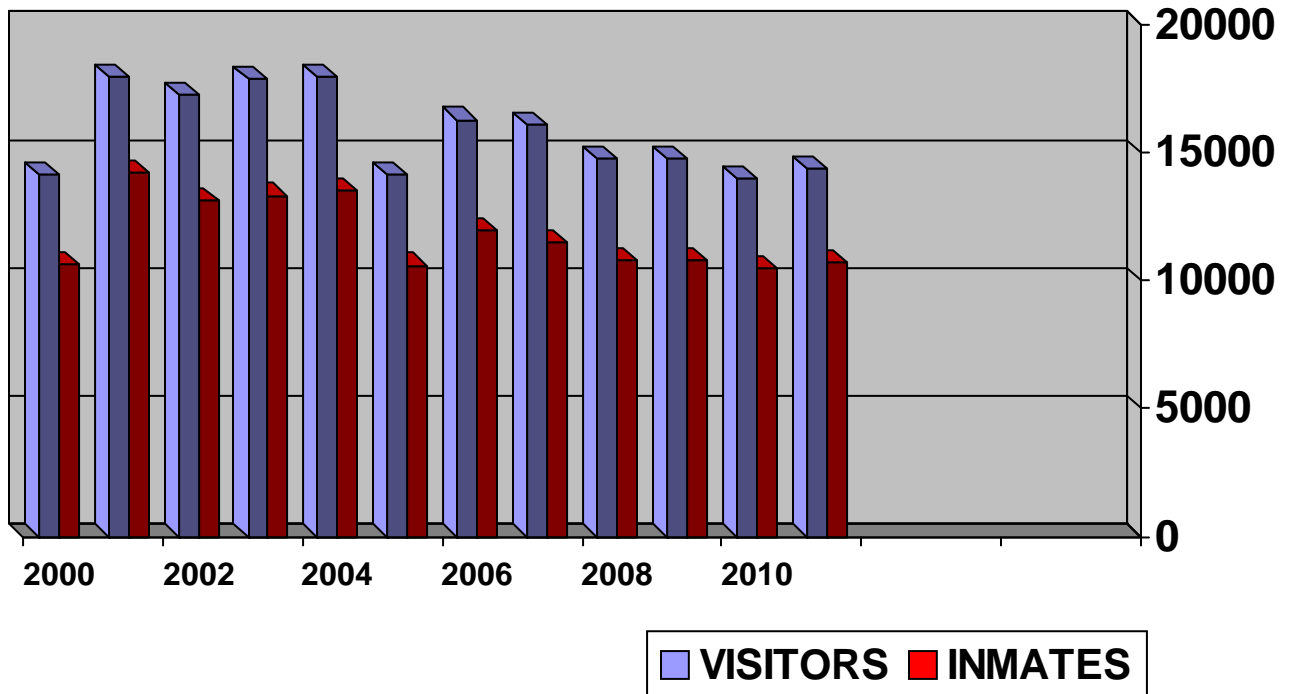
Per the Ohio Revised Code any monies collected are placed into the Lorain County General Fund.



# VISITATION

	INMATES		VISITORS	
	2010	2011	2010	2011
<b>JANUARY:</b>	808	<b>893</b>	1099	<b>1120</b>
<b>FEBRUARY:</b>	736	<b>755</b>	994	<b>1015</b>
<b>MARCH:</b>	907	<b>834</b>	1201	<b>1129</b>
<b>APRIL:</b>	849	<b>856</b>	1130	<b>1187</b>
<b>MAY:</b>	897	<b>906</b>	1190	<b>1259</b>
<b>JUNE:</b>	847	<b>583</b>	1180	<b>727</b>
<b>JULY:</b>	884	<b>912</b>	1197	<b>1217</b>
<b>AUGUST:</b>	992	<b>1018</b>	1232	<b>1377</b>
<b>SEPTEMBER:</b>	879	<b>989</b>	1196	<b>1340</b>
<b>OCTOBER:</b>	924	<b>966</b>	1205	<b>1264</b>
<b>NOVEMBER:</b>	906	<b>1020</b>	1202	<b>1353</b>
<b>DECEMBER:</b>	842	<b>1001</b>	1167	<b>1341</b>
<b>TOTAL:</b>	10471	<b>10733</b>	13993	<b>14329</b>

## VISITATION CHART



	2000	2001	2002	2003	2004	2005	2006	2007	2008	2009	2010	2011
<b>INMATES</b>	10,616	14,221	13,081	13,312	13,483	10,579	11,948	11,451	10,806	10,806	10,471	10,733
<b>VISITORS</b>	14,103	17,945	17,254	17,873	17,957	14,101	16,264	16,097	14,752	14,742	13,993	14,742

