

# LORAIN COUNTY SHERIFF'S OFFICE

## 2012 ANNUAL JAIL REPORT



PHIL R. STAMMITTI  
SHERIFF

# 2012 JAIL DIVISION ANNUAL REPORT

## TABLE OF CONTENTS

### Section 1:

- ★ Annual Report Highlights

### Section 2:

- ★ Committing Agency Monthly Statistics
- ★ Committing Agency Yearly Statistics
- ★ Monthly Summary of Inmate Releases
- ★ Yearly Summary of Inmate Releases
- ★ Average Monthly Inmate Release Chart
- ★ Yearly Average Jail Daily Population Chart

### Section 3:

- ★ Summary of Inmate Charges
- ★ Inmate Charges Comparison Charts
- ★ Ethnic Origin of Inmates
- ★ Ethnic Origin of Inmates Chart
- ★ Summary of Inmate Gender
- ★ Inmate Gender Chart

### Section 4:

- ★ Monthly Ordinance Fees
- ★ Ordinance Fees Generated Comparison Chart
- ★ Three Highest Ordinance Agencies Chart

### Section 5:

- ★ Facility Medical Actions
- ★ Facility Mental Health Actions
- ★ Facility Medical Co-Pay

### Section 6:

- ★ Summary of Yearly Jail Reports
- ★ Yearly Inmate Commissary Chart
- ★ Inmate Meals Served Chart
- ★ Monthly Telephone System
- ★ Inmate Telephone System Chart
- ★ Inmate Programs

### Section 7:

- ★ Yearly Work Release Funds Chart
- ★ Visitation
- ★ Inmate Visitation Chart



## 2012 ANNUAL REPORT HIGHLIGHTS

- ★ **Commitments Increased by 4.7% from 7,600 in 2011 to 7,964 in 2012.**
- ★ **State Charges Increased by 4.8% from 7,417 in 2011 to 7,779 in 2012.**
- ★ **Ordinance Charges Increased by 1% from 183 in 2011 to 185 in 2012.**
- ★ **Funds Generated from Ordinance Cases Decreased by 30% from \$69,900 in 2011 to \$53,550 in 2012.**
- ★ **Male Bookings Increased by 4.5% from 5,911 in 2011 to 6,180 in 2012.**
- ★ **Female Bookings Increased by 5% from 1,689 in 2011 to 1,784 in 2012.**
- ★ **Felony Bookings Decreased by 1% from 3,225 in 2011 to 3,182 in 2012.**
- ★ **Misdemeanor Bookings Increased by 9% from 4,291 in 2011 to 4,704 in 2012.**
- ★ **Parole / Probation Violations Decreased by 7% from 84 in 2011 to 78 in 2012.**
- ★ **The Average Daily Inmate Population Increased by 5% from 392 in 2011 to 415 in 2012.**
- ★ **Inmate Releases Increased by 5% from 7,569. in 2012 to 7,960 in 2012.**
- ★ **Funds Generated by the Inmate Work Release Program Decreased by 22% from \$9,396 in 2011 to \$2,064 in 2012.**
- ★ **Inmate Telephone Contributions Increased by 7% from \$130,855 in 2011 to \$141,220 in 2012.**
- ★ **Continued Active Accreditation from the National Commission on Correctional Health Care.**



# RESIDENTS COMMITTED TO THE LORAIN COUNTY JAIL BY VARIOUS AGENCIES, COURTS AND OTHERS MONTHLY TOTALS

**JANUARY 2012**

	FEDERAL		STATE		ORDINANCE		TOTAL	
	2011	2012	2011	2012	2011	2012	2011	2012
<b>ADULT PAR / PROB:</b>	0	<b>0</b>	20	<b>13</b>	0	<b>0</b>	20	<b>13</b>
<b>AMHERST:</b>	0	<b>0</b>	31	<b>24</b>	1	<b>0</b>	32	<b>24</b>
<b>AVON:</b>	0	<b>0</b>	27	<b>24</b>	1	<b>0</b>	28	<b>24</b>
<b>AVON LAKE:</b>	0	<b>0</b>	12	<b>12</b>	0	<b>0</b>	12	<b>12</b>
<b>COMMON PLEAS:</b>	0	<b>0</b>	113	<b>73</b>	0	<b>0</b>	113	<b>73</b>
<b>DOM. RELATIONS:</b>	0	<b>0</b>	14	<b>10</b>	0	<b>0</b>	14	<b>10</b>
<b>ELYRIA:</b>	0	<b>0</b>	104	<b>110</b>	3	<b>12</b>	107	<b>122</b>
<b>GRAFTON:</b>	0	<b>0</b>	5	<b>4</b>	1	<b>0</b>	6	<b>5</b>
<b>JUV COURT:</b>	0	<b>0</b>	2	<b>4</b>	0	<b>0</b>	2	<b>4</b>
<b>LAGRANGE:</b>	0	<b>0</b>	5	<b>5</b>	0	<b>0</b>	5	<b>5</b>
<b>LORAIN:</b>	0	<b>0</b>	142	<b>120</b>	3	<b>3</b>	12	<b>132</b>
<b>METRO PARKS:</b>	0	<b>0</b>	1	<b>1</b>	0	<b>0</b>	1	<b>1</b>
<b>N. RIDGEVILLE:</b>	0	<b>0</b>	17	<b>12</b>	0	<b>0</b>	9	<b>21</b>
<b>OBERLIN:</b>	0	<b>0</b>	14	<b>7</b>	0	<b>0</b>	14	<b>7</b>
<b>OTHER:</b>	0	<b>0</b>	1	<b>1</b>	0	<b>0</b>	1	<b>1</b>
<b>SHEFFIELD LAKE:</b>	0	<b>0</b>	4	<b>1</b>	0	<b>0</b>	4	<b>1</b>
<b>SHEFFIELD VILL:</b>	0	<b>0</b>	10	<b>2</b>	1	<b>1</b>	11	<b>3</b>
<b>SOUTH AMHERST:</b>	0	<b>0</b>	0	<b>2</b>	0	<b>0</b>	0	<b>2</b>
<b>SHERIFF:</b>	0	<b>0</b>	105	<b>135</b>	0	<b>0</b>	105	<b>135</b>
<b>STATE PATROL:</b>	0	<b>0</b>	49	<b>57</b>	0	<b>0</b>	49	<b>57</b>
<b>VERMILION:</b>	0	<b>0</b>	5	<b>2</b>	0	<b>0</b>	0	<b>2</b>
<b>WELLINGTON:</b>	0	<b>0</b>	10	<b>6</b>	0	<b>0</b>	10	<b>6</b>
<b>TOTAL:</b>	0	<b>0</b>	691	<b>625</b>	10	<b>16</b>	555	<b>641</b>

## PRIOR JANUARY TOTALS

	Fed.	State	Ord.	Total
<b>2010:</b>	0	620	10	630
<b>2009:</b>	0	643	7	650
<b>2008:</b>	0	731	8	739
<b>2007:</b>	0	684	7	691
<b>2006:</b>	0	687	7	694
<b>2005:</b>	0	716	13	729
<b>2004:</b>	0	597	15	612
<b>2003:</b>	0	692	21	713
<b>2002:</b>	0	704	27	731
<b>2001:</b>	0	549	41	590
<b>2000:</b>	0	550	42	592



# RESIDENTS COMMITTED TO THE LORAIN COUNTY JAIL BY VARIOUS AGENCIES, COURTS AND OTHERS MONTHLY TOTALS

**FEBRUARY 2012**

	FEDERAL		STATE		ORDINANCE		TOTAL	
	2011	2012	2011	2012	2011	2012	2011	2012
<b>ADULT PAR / PROB:</b>	0	0	17	12	0	0	17	12
<b>AMHERST:</b>	0	0	21	31	0	3	21	34
<b>AVON:</b>	0	0	11	21	0	0	11	21
<b>AVON LAKE:</b>	0	0	4	12	0	0	4	12
<b>COMMON PLEAS:</b>	0	0	88	74	0	0	88	74
<b>DOM. RELATIONS:</b>	0	0	13	17	0	0	13	17
<b>ELYRIA:</b>	0	0	82	112	1	8	83	120
<b>GRAFTON:</b>	0	0	0	2	0	0	0	2
<b>JUV COURT:</b>	0	0	4	4	0	0	4	4
<b>LAGRANGE:</b>	0	0	3	5	0	0	3	5
<b>LORAIN:</b>	0	0	116	109	8	9	124	118
<b>METRO PARKS:</b>	0	0	0	2	0	0	0	2
<b>N. RIDGEVILLE:</b>	0	0	15	10	0	0	15	10
<b>OBERLIN:</b>	0	0	11	8	0	0	11	8
<b>OTHER:</b>	0	0	1	0	0	0	1	0
<b>SHEFFIELD LAKE:</b>	0	0	5	2	0	0	5	2
<b>SHEFFIELD VILL:</b>	0	0	10	16	0	3	10	19
<b>SOUTH AMHERST:</b>	0	0	0	0	0	0	1	1
<b>SHERIFF:</b>	0	0	96	130	0	0	96	129
<b>STATE PATROL:</b>	0	0	51	61	0	0	51	61
<b>VERMILION:</b>	0	0	4	3	0	0	4	3
<b>WELLINGTON:</b>	0	0	6	3	0	0	6	3
<b>TOTAL:</b>	0	0	558	634	9	23	568	657

## PRIOR FEBRUARY TOTALS

	Fed.	State	Ord.	Total
<b>2010:</b>	0	605	12	617
<b>2009:</b>	0	501	5	506
<b>2008:</b>	0	648	12	660
<b>2007:</b>	0	684	7	691
<b>2006:</b>	0	687	7	694
<b>2005:</b>	0	716	13	729
<b>2004:</b>	0	597	15	612
<b>2003:</b>	0	692	21	713
<b>2002:</b>	0	704	27	731
<b>2001:</b>	0	549	41	590
<b>2000:</b>	0	550	42	592



# RESIDENTS COMMITTED TO THE LORAIN COUNTY JAIL BY VARIOUS AGENCIES, COURTS AND OTHERS MONTHLY TOTALS

**MARCH 2012**

	FEDERAL		STATE		ORDINANCE		TOTAL	
	2011	2012	2011	2012	2011	2012	2011	2012
<b>ADULT PAR / PROB:</b>	0	0	17	20	0	0	17	20
<b>AMHERST:</b>	0	0	23	26	2	0	25	26
<b>AVON:</b>	0	0	15	23	1	0	16	23
<b>AVON LAKE:</b>	0	0	7	9	0	0	7	9
<b>COMMON PLEAS:</b>	0	0	112	61	0	0	112	61
<b>DOM. RELATIONS:</b>	0	0	12	6	0	0	12	6
<b>ELYRIA:</b>	0	0	116	123	2	6	118	129
<b>GRAFTON:</b>	0	0	1	1	0	0	1	1
<b>JUV COURT:</b>	0	0	4	4	0	0	4	4
<b>LAGRANGE:</b>	0	0	3	4	0	0	3	4
<b>LORAIN:</b>	0	0	111	125	12	14	123	139
<b>METRO PARKS:</b>	0	0	1	2	0	0	1	2
<b>N. RIDGEVILLE:</b>	0	0	14	18	0	0	14	18
<b>OBERLIN:</b>	0	0	15	13	0	0	15	13
<b>OTHER:</b>	0	0	2	0	0	0	2	0
<b>SHEFFIELD LAKE:</b>	0	0	2	2	0	0	2	2
<b>SHEFFIELD VILL:</b>	0	0	9	5	0	0	9	5
<b>SOUTH AMHERST:</b>	0	0	1	1	0	0	1	1
<b>SHERIFF:</b>	0	0	119	152	0	0	119	152
<b>STATE PATROL:</b>	0	0	40	80	0	0	40	80
<b>VERMILION:</b>	0	0	3	4	2	1	5	5
<b>WELLINGTON:</b>	0	0	6	8	0	0	6	8
<b>TOTAL:</b>	0	0	633	678	19	30	652	708

## PRIOR MARCH TOTALS

	Fed.	State	Ord.	Total
<b>2010:</b>	0	683	8	691
<b>2009:</b>	0	660	12	672
<b>2008:</b>	0	700	13	713
<b>2007:</b>	0	684	7	691
<b>2006:</b>	0	687	7	694
<b>2005:</b>	0	716	13	729
<b>2004:</b>	0	597	15	612
<b>2003:</b>	0	692	21	713
<b>2002:</b>	0	704	27	731
<b>2001:</b>	0	549	41	590
<b>2000:</b>	0	550	42	592



# RESIDENTS COMMITTED TO THE LORAIN COUNTY JAIL BY VARIOUS AGENCIES, COURTS AND OTHERS MONTHLY TOTALS

**APRIL 2012**

	FEDERAL		STATE		ORDINANCE		TOTAL	
	2011	2012	2011	2012	2011	2012	2011	2012
<b>ADULT PAR / PROB:</b>	0	<b>0</b>	17	<b>11</b>	0	<b>0</b>	17	<b>11</b>
<b>AMHERST:</b>	0	<b>0</b>	23	<b>18</b>	2	<b>0</b>	25	<b>18</b>
<b>AVON:</b>	0	<b>0</b>	15	<b>14</b>	1	<b>1</b>	16	<b>15</b>
<b>AVON LAKE:</b>	0	<b>0</b>	7	<b>10</b>	0	<b>1</b>	7	<b>11</b>
<b>COMMON PLEAS:</b>	0	<b>0</b>	112	<b>32</b>	0	<b>0</b>	112	<b>32</b>
<b>DOM. RELATIONS:</b>	0	<b>0</b>	12	<b>5</b>	0	<b>0</b>	12	<b>5</b>
<b>ELYRIA:</b>	0	<b>0</b>	116	<b>108</b>	2	<b>4</b>	118	<b>112</b>
<b>GRAFTON:</b>	0	<b>0</b>	1	<b>5</b>	0	<b>0</b>	1	<b>5</b>
<b>JUV COURT:</b>	0	<b>0</b>	4	<b>2</b>	0	<b>0</b>	4	<b>2</b>
<b>LAGRANGE:</b>	0	<b>0</b>	3	<b>2</b>	0	<b>0</b>	3	<b>2</b>
<b>LORAIN:</b>	0	<b>0</b>	111	<b>115</b>	12	<b>3</b>	123	<b>118</b>
<b>METRO PARKS:</b>	0	<b>0</b>	1	<b>6</b>	0	<b>0</b>	1	<b>6</b>
<b>N. RIDGEVILLE:</b>	0	<b>0</b>	14	<b>17</b>	0	<b>1</b>	14	<b>18</b>
<b>OBERLIN:</b>	0	<b>0</b>	15	<b>4</b>	0	<b>0</b>	15	<b>4</b>
<b>OTHER:</b>	0	<b>0</b>	2	<b>0</b>	0	<b>0</b>	2	<b>0</b>
<b>SHEFFIELD LAKE:</b>	0	<b>0</b>	2	<b>1</b>	0	<b>0</b>	2	<b>1</b>
<b>SHEFFIELD VILL:</b>	0	<b>0</b>	9	<b>17</b>	0	<b>0</b>	9	<b>17</b>
<b>SOUTH AMHERST:</b>	0	<b>0</b>	1	<b>1</b>	0	<b>0</b>	1	<b>1</b>
<b>SHERIFF:</b>	0	<b>0</b>	119	<b>190</b>	0	<b>0</b>	119	<b>190</b>
<b>STATE PATROL:</b>	0	<b>0</b>	40	<b>53</b>	0	<b>0</b>	40	<b>53</b>
<b>VERMILION:</b>	0	<b>0</b>	3	<b>2</b>	2	<b>0</b>	5	<b>2</b>
<b>WELLINGTON:</b>	0	<b>0</b>	6	<b>2</b>	0	<b>0</b>	6	<b>2</b>
<b>TOTAL:</b>	0	<b>0</b>	633	<b>615</b>	19	<b>10</b>	652	<b>625</b>

## PRIOR APRIL TOTALS

	Fed.	State	Ord.	Total
<b>2010:</b>	0	683	8	691
<b>2009:</b>	0	660	12	672
<b>2008:</b>	0	700	13	713
<b>2007:</b>	0	684	7	691
<b>2006:</b>	0	687	7	694
<b>2005:</b>	0	716	13	729
<b>2004:</b>	0	597	15	612
<b>2003:</b>	0	692	21	713
<b>2002:</b>	0	704	27	731
<b>2001:</b>	0	549	41	590
<b>2000:</b>	0	550	42	592



# RESIDENTS COMMITTED TO THE LORAIN COUNTY JAIL BY VARIOUS AGENCIES, COURTS AND OTHERS MONTHLY TOTALS

**MAY 2012**

	FEDERAL		STATE		ORDINANCE		TOTAL	
	2011	2012	2011	2012	2011	2012	2011	2012
<b>ADULT PAR / PROB:</b>	0	0	11	14	0	0	11	14
<b>AMHERST:</b>	0	0	23	27	0	0	23	27
<b>AVON:</b>	0	0	13	16	0	1	13	17
<b>AVON LAKE:</b>	0	0	9	12	0	0	9	12
<b>COMMON PLEAS:</b>	0	0	108	80	0	0	108	80
<b>DOM. RELATIONS:</b>	0	0	12	11	0	0	12	11
<b>ELYRIA:</b>	0	0	96	141	3	0	99	141
<b>GRAFTON:</b>	0	0	2	4	0	1	2	5
<b>JUV COURT:</b>	0	0	3	4	0	0	3	4
<b>LAGRANGE:</b>	0	0	3	6	0	0	3	6
<b>LORAIN:</b>	0	0	134	125	20	11	154	136
<b>METRO PARKS:</b>	0	0	2	6	0	0	2	6
<b>N. RIDGEVILLE:</b>	0	0	11	16	0	0	11	16
<b>OBERLIN:</b>	0	0	18	8	0	0	18	8
<b>OTHER:</b>	0	0	0	0	0	0	0	0
<b>SHEFFIELD LAKE:</b>	0	0	3	2	0	0	3	2
<b>SHEFFIELD VILL:</b>	0	0	10	9	2	2	12	11
<b>SOUTH AMHERST:</b>	0	0	2	1	0	0	2	1
<b>SHERIFF:</b>	0	0	95	150	0	0	95	150
<b>STATE PATROL:</b>	0	0	47	44	0	0	47	44
<b>VERMILION:</b>	0	0	5	3	0	0	5	3
<b>WELLINGTON:</b>	0	0	7	3	0	0	7	3
<b>TOTAL:</b>	0	0	614	682	25	15	639	697

## PRIOR MAY TOTALS

	Fed.	State	Ord.	Total
<b>2010:</b>	0	577	19	596
<b>2009:</b>	0	720	8	728
<b>2008:</b>	0	684	7	691
<b>2007:</b>	0	687	7	694
<b>2006:</b>	0	716	13	729
<b>2005:</b>	0	597	15	612
<b>2004:</b>	0	692	21	713
<b>2003:</b>	0	704	27	731
<b>2002:</b>	0	549	41	590
<b>2001:</b>	0	550	42	592
<b>2000:</b>	0	550	42	592





# RESIDENTS COMMITTED TO THE LORAIN COUNTY JAIL BY VARIOUS AGENCIES, COURTS AND OTHERS MONTHLY TOTALS

**JUNE 2012**

	FEDERAL		STATE		ORDINANCE		TOTAL	
	2011	2012	2011	2012	2011	2012	2011	2012
<b>ADULT PAR / PROB:</b>	0	0	14	14	0	0	14	14
<b>AMHERST:</b>	0	0	34	18	0	0	34	18
<b>AVON:</b>	0	0	16	18	0	0	16	18
<b>AVON LAKE:</b>	0	0	8	2	0	0	8	2
<b>COMMON PLEAS:</b>	0	0	110	113	0	0	110	113
<b>DOM. RELATIONS:</b>	0	0	10	14	0	0	10	14
<b>ELYRIA:</b>	0	0	101	150	2	6	103	156
<b>GRAFTON:</b>	0	0	4	1	0	1	4	1
<b>JUV COURT:</b>	0	0	5	4	0	0	5	4
<b>LAGRANGE:</b>	0	0	4	3	0	0	4	3
<b>LORAIN:</b>	0	0	111	125	9	2	111	127
<b>METRO PARKS:</b>	0	0	1	2	0	0	1	2
<b>N. RIDGEVILLE:</b>	0	0	14	13	0	1	14	14
<b>OBERLIN:</b>	0	0	16	10	0	0	16	10
<b>OTHER:</b>	0	0	3	2	0	0	3	2
<b>SHEFFIELD LAKE:</b>	0	0	2	1	0	0	2	1
<b>SHEFFIELD VILL:</b>	0	0	13	12	0	3	13	15
<b>SOUTH AMHERST:</b>	0	0	1	0	0	0	1	0
<b>SHERIFF:</b>	0	0	74	130	0	0	74	130
<b>STATE PATROL:</b>	0	0	42	45	0	0	42	45
<b>VERMILION:</b>	0	0	3	4	7	0	3	4
<b>WELLINGTON:</b>	0	0	9	10	0	0	9	10
<b>TOTAL:</b>	0	0	595	691	18	13	613	703

## PRIOR JUNE TOTALS

	Fed.	State	Ord.	Total
<b>2010:</b>	0	621	0	621
<b>2009:</b>	0	769	9	778
<b>2008:</b>	0	663	3	666
<b>2007:</b>	0	684	7	691
<b>2006:</b>	0	687	7	694
<b>2005:</b>	0	716	13	729
<b>2004:</b>	0	597	15	612
<b>2003:</b>	0	692	21	713
<b>2002:</b>	0	704	27	731
<b>2001:</b>	0	549	41	590
<b>2000:</b>	0	550	42	592



# RESIDENTS COMMITTED TO THE LORAIN COUNTY JAIL BY VARIOUS AGENCIES, COURTS AND OTHERS MONTHLY TOTALS

**JULY 2012**

	FEDERAL		STATE		ORDINANCE		TOTAL	
	2011	2012	2011	2012	2011	2012	2011	2012
<b>ADULT PAR / PROB:</b>	0	<b>0</b>	11	<b>18</b>	0	<b>0</b>	11	<b>18</b>
<b>AMHERST:</b>	0	<b>0</b>	27	<b>32</b>	0	<b>0</b>	27	<b>32</b>
<b>AVON:</b>	0	<b>0</b>	22	<b>22</b>	0	<b>0</b>	22	<b>22</b>
<b>AVON LAKE:</b>	0	<b>0</b>	10	<b>8</b>	0	<b>0</b>	10	<b>8</b>
<b>COMMON PLEAS:</b>	0	<b>0</b>	98	<b>86</b>	0	<b>0</b>	98	<b>86</b>
<b>DOM. RELATIONS:</b>	0	<b>0</b>	6	<b>21</b>	0	<b>0</b>	6	<b>21</b>
<b>ELYRIA:</b>	0	<b>0</b>	123	<b>119</b>	0	<b>0</b>	123	<b>119</b>
<b>GRAFTON:</b>	0	<b>0</b>	3	<b>2</b>	0	<b>0</b>	3	<b>2</b>
<b>JUV COURT:</b>	0	<b>0</b>	6	<b>3</b>	0	<b>0</b>	6	<b>3</b>
<b>LAGRANGE:</b>	0	<b>0</b>	5	<b>4</b>	0	<b>1</b>	5	<b>5</b>
<b>LORAIN:</b>	0	<b>0</b>	115	<b>133</b>	4	<b>7</b>	119	<b>140</b>
<b>METRO PARKS:</b>	0	<b>0</b>	4	<b>4</b>	0	<b>0</b>	4	<b>4</b>
<b>N. RIDGEVILLE:</b>	0	<b>0</b>	9	<b>12</b>	0	<b>0</b>	9	<b>12</b>
<b>OBERLIN:</b>	0	<b>0</b>	20	<b>16</b>	0	<b>0</b>	20	<b>16</b>
<b>OTHER:</b>	0	<b>0</b>	1	<b>1</b>	0	<b>0</b>	1	<b>1</b>
<b>SHEFFIELD LAKE:</b>	0	<b>0</b>	3	<b>7</b>	0	<b>0</b>	3	<b>7</b>
<b>SHEFFIELD VILL:</b>	0	<b>0</b>	13	<b>7</b>	1	<b>3</b>	14	<b>10</b>
<b>SOUTH AMHERST:</b>	0	<b>0</b>	0	<b>2</b>	0	<b>0</b>	0	<b>2</b>
<b>SHERIFF:</b>	0	<b>0</b>	84	<b>137</b>	0	<b>0</b>	84	<b>137</b>
<b>STATE PATROL:</b>	0	<b>0</b>	36	<b>61</b>	0	<b>0</b>	36	<b>61</b>
<b>VERMILION:</b>	0	<b>0</b>	1	<b>8</b>	0	<b>1</b>	1	<b>9</b>
<b>WELLINGTON:</b>	0	<b>0</b>	11	<b>6</b>	0	<b>0</b>	11	<b>6</b>
<b>TOTAL:</b>	0	<b>0</b>	608	<b>709</b>	5	<b>12</b>	613	<b>721</b>

## PRIOR JULY TOTALS

	Fed.	State	Ord.	Total
<b>2010:</b>	0	604	10	614
<b>2009:</b>	0	705	20	725
<b>2008:</b>	0	691	9	700
<b>2007:</b>	0	684	7	691
<b>2006:</b>	0	687	7	694
<b>2005:</b>	0	716	13	729
<b>2004:</b>	0	597	15	612
<b>2003:</b>	0	692	21	713
<b>2002:</b>	0	704	27	731
<b>2001:</b>	0	549	41	590
<b>2000:</b>	0	550	42	592



# RESIDENTS COMMITTED TO THE LORAIN COUNTY JAIL BY VARIOUS AGENCIES, COURTS AND OTHERS MONTHLY TOTALS

**AUGUST 2012**

	FEDERAL		STATE		ORDINANCE		TOTAL	
	2011	2012	2011	2012	2011	2012	2011	2012
<b>ADULT PAR / PROB:</b>	0	0	17	15	0	0	17	15
<b>AMHERST:</b>	0	0	29	16	1	1	30	17
<b>AVON:</b>	0	0	17	23	1	0	18	23
<b>AVON LAKE:</b>	0	0	7	5	0	0	7	5
<b>COMMON PLEAS:</b>	0	0	126	39	0	0	126	39
<b>DOM. RELATIONS:</b>	0	0	13	7	0	0	13	7
<b>ELYRIA:</b>	0	0	122	114	2	7	124	121
<b>GRAFTON:</b>	0	0	6	4	0	0	6	4
<b>JUV COURT:</b>	0	0	6	0	0	0	6	0
<b>LAGRANGE:</b>	0	0	6	7	0	0	6	7
<b>LORAIN:</b>	0	0	124	132	19	14	143	146
<b>METRO PARKS:</b>	0	0	1	7	0	0	1	7
<b>N. RIDGEVILLE:</b>	0	0	19	20	0	0	19	20
<b>OBERLIN:</b>	0	0	13	7	0	0	13	7
<b>OTHER:</b>	0	0	3	0	0	0	3	0
<b>SHEFFIELD LAKE:</b>	0	0	5	5	0	0	5	5
<b>SHEFFIELD VILL:</b>	0	0	5	12	0	3	5	12
<b>SOUTH AMHERST:</b>	0	0	2	0	0	0	2	0
<b>SHERIFF:</b>	0	0	106	174	0	0	106	174
<b>STATE PATROL:</b>	0	0	24	51	0	0	24	51
<b>VERMILION:</b>	0	0	6	5	1	0	7	5
<b>WELLINGTON:</b>	0	0	7	8	0	0	7	8
<b>TOTAL:</b>	0	0	664	651	24	25	688	673

## PRIOR AUGUST TOTALS

	Fed.	State	Ord.	Total
<b>2010:</b>	0	668	8	676
<b>2009:</b>	0	716	8	724
<b>2008:</b>	0	647	7	654
<b>2007:</b>	0	684	7	691
<b>2006:</b>	0	687	7	694
<b>2005:</b>	0	716	13	729
<b>2004:</b>	0	597	15	612
<b>2003:</b>	0	692	21	713
<b>2002:</b>	0	704	27	731
<b>2001:</b>	0	549	41	590
<b>2000:</b>	0	550	42	592



# RESIDENTS COMMITTED TO THE LORAIN COUNTY JAIL BY VARIOUS AGENCIES, COURTS AND OTHERS MONTHLY TOTALS

**SEPTEMBER 2012**

	FEDERAL		STATE		ORDINANCE		TOTAL	
	2011	2012	2011	2012	2011	2012	2011	2012
<b>ADULT PAR / PROB:</b>	0	<b>0</b>	14	<b>9</b>	0	<b>0</b>	14	<b>9</b>
<b>AMHERST:</b>	0	<b>0</b>	20	<b>16</b>	0	<b>1</b>	20	<b>17</b>
<b>AVON:</b>	0	<b>0</b>	19	<b>12</b>	0	<b>1</b>	19	<b>13</b>
<b>AVON LAKE:</b>	0	<b>0</b>	7	<b>3</b>	0	<b>0</b>	7	<b>3</b>
<b>COMMON PLEAS:</b>	0	<b>0</b>	117	<b>34</b>	0	<b>0</b>	117	<b>34</b>
<b>DOM. RELATIONS:</b>	0	<b>0</b>	7	<b>13</b>	0	<b>0</b>	7	<b>13</b>
<b>ELYRIA:</b>	0	<b>0</b>	105	<b>162</b>	5	<b>0</b>	110	<b>162</b>
<b>GRAFTON:</b>	0	<b>0</b>	2	<b>1</b>	0	<b>0</b>	2	<b>1</b>
<b>JUV COURT:</b>	0	<b>0</b>	5	<b>1</b>	0	<b>0</b>	5	<b>1</b>
<b>LAGRANGE:</b>	0	<b>0</b>	4	<b>5</b>	0	<b>0</b>	4	<b>5</b>
<b>LORAIN:</b>	0	<b>0</b>	115	<b>136</b>	11	<b>0</b>	126	<b>136</b>
<b>METRO PARKS:</b>	0	<b>0</b>	0	<b>0</b>	0	<b>0</b>	0	<b>0</b>
<b>N. RIDGEVILLE:</b>	0	<b>0</b>	18	<b>19</b>	0	<b>1</b>	18	<b>20</b>
<b>OBERLIN:</b>	0	<b>0</b>	7	<b>11</b>	0	<b>0</b>	7	<b>11</b>
<b>OTHER:</b>	0	<b>0</b>	1	<b>1</b>	0	<b>0</b>	1	<b>1</b>
<b>SHEFFIELD LAKE:</b>	0	<b>0</b>	5	<b>9</b>	0	<b>1</b>	5	<b>10</b>
<b>SHEFFIELD VILL:</b>	0	<b>0</b>	6	<b>7</b>	0	<b>1</b>	6	<b>8</b>
<b>SOUTH AMHERST:</b>	0	<b>0</b>	1	<b>0</b>	0	<b>0</b>	1	<b>0</b>
<b>SHERIFF:</b>	0	<b>0</b>	102	<b>186</b>	0	<b>0</b>	102	<b>186</b>
<b>STATE PATROL:</b>	0	<b>0</b>	38	<b>58</b>	0	<b>0</b>	38	<b>58</b>
<b>VERMILION:</b>	0	<b>0</b>	4	<b>1</b>	1	<b>0</b>	5	<b>1</b>
<b>WELLINGTON:</b>	0	<b>0</b>	10	<b>4</b>	0	<b>0</b>	10	<b>4</b>
<b>TOTAL:</b>	0	<b>0</b>	607	<b>688</b>	17	<b>5</b>	624	<b>693</b>

## PRIOR SEPTEMBER TOTALS

	Fed.	State	Ord.	Total
<b>2010:</b>	0	663	6	669
<b>2009:</b>	0	728	11	739
<b>2008:</b>	0	674	9	683
<b>2007:</b>	0	684	7	691
<b>2006:</b>	0	687	7	694
<b>2005:</b>	0	716	13	729
<b>2004:</b>	0	597	15	612
<b>2003:</b>	0	692	21	713
<b>2002:</b>	0	704	27	731
<b>2001:</b>	0	549	41	590
<b>2000:</b>	0	550	42	592



# RESIDENTS COMMITTED TO THE LORAIN COUNTY JAIL BY VARIOUS AGENCIES, COURTS AND OTHERS MONTHLY TOTALS

**OCTOBER 2012**

	FEDERAL		STATE		ORDINANCE		TOTAL	
	2011	2012	2011	2012	2011	2012	2011	2012
<b>ADULT PAR / PROB:</b>	0	<b>0</b>	13	<b>14</b>	0	<b>0</b>	13	<b>14</b>
<b>AMHERST:</b>	0	<b>0</b>	22	<b>15</b>	0	<b>0</b>	22	<b>15</b>
<b>AVON:</b>	0	<b>0</b>	21	<b>13</b>	0	<b>0</b>	21	<b>13</b>
<b>AVON LAKE:</b>	0	<b>0</b>	8	<b>4</b>	0	<b>0</b>	8	<b>4</b>
<b>COMMON PLEAS:</b>	0	<b>0</b>	88	<b>47</b>	0	<b>0</b>	88	<b>47</b>
<b>DOM. RELATIONS:</b>	0	<b>0</b>	16	<b>9</b>	0	<b>0</b>	16	<b>9</b>
<b>ELYRIA:</b>	0	<b>0</b>	84	<b>133</b>	6	<b>11</b>	90	<b>144</b>
<b>GRAFTON:</b>	0	<b>0</b>	2	<b>1</b>	0	<b>1</b>	2	<b>2</b>
<b>JUV COURT:</b>	0	<b>0</b>	3	<b>1</b>	0	<b>0</b>	3	<b>1</b>
<b>LAGRANGE:</b>	0	<b>0</b>	5	<b>11</b>	0	<b>0</b>	5	<b>11</b>
<b>LORAIN:</b>	0	<b>0</b>	125	<b>115</b>	4	<b>2</b>	129	<b>117</b>
<b>METRO PARKS:</b>	0	<b>0</b>	0	<b>4</b>	0	<b>0</b>	0	<b>4</b>
<b>N. RIDGEVILLE:</b>	0	<b>0</b>	15	<b>11</b>	0	<b>0</b>	15	<b>11</b>
<b>OVERLIN:</b>	0	<b>0</b>	14	<b>8</b>	0	<b>0</b>	14	<b>8</b>
<b>OTHER:</b>	0	<b>0</b>	2	<b>0</b>	0	<b>0</b>	2	<b>0</b>
<b>SHEFFIELD LAKE:</b>	0	<b>0</b>	0	<b>4</b>	0	<b>0</b>	0	<b>4</b>
<b>SHEFFIELD VILL:</b>	0	<b>0</b>	10	<b>8</b>	2	<b>1</b>	12	<b>9</b>
<b>SOUTH AMHERST:</b>	0	<b>0</b>	1	<b>0</b>	0	<b>0</b>	1	<b>0</b>
<b>SHERIFF:</b>	0	<b>0</b>	120	<b>159</b>	0	<b>0</b>	120	<b>159</b>
<b>STATE PATROL:</b>	0	<b>0</b>	44	<b>65</b>	0	<b>0</b>	44	<b>65</b>
<b>VERMILION:</b>	0	<b>0</b>	3	<b>3</b>	1	<b>0</b>	4	<b>3</b>
<b>WELLINGTON:</b>	0	<b>0</b>	5	<b>4</b>	0	<b>0</b>	5	<b>4</b>
<b>TOTAL:</b>	0	<b>0</b>	601	<b>629</b>	13	<b>15</b>	614	<b>644</b>

## PRIOR OCTOBER TOTALS

	Fed.	State	Ord.	Total
<b>2010:</b>	0	634	8	642
<b>2009:</b>	0	655	9	664
<b>2008:</b>	0	648	10	658
<b>2007:</b>	0	684	7	691
<b>2006:</b>	0	687	7	694
<b>2005:</b>	0	716	13	729
<b>2004:</b>	0	597	15	612
<b>2003:</b>	0	692	21	713
<b>2002:</b>	0	704	27	731
<b>2001:</b>	0	549	41	590
<b>2000:</b>	0	550	42	592



# RESIDENTS COMMITTED TO THE LORAIN COUNTY JAIL BY VARIOUS AGENCIES, COURTS AND OTHERS MONTHLY TOTALS

**NOVEMBER 2012**

	FEDERAL		STATE		ORDINANCE		TOTAL	
	2011	2012	2011	2012	2011	2012	2011	2012
<b>ADULT PAR / PROB:</b>	0	<b>0</b>	6	<b>11</b>	0	<b>0</b>	13	<b>11</b>
<b>AMHERST:</b>	0	<b>0</b>	18	<b>13</b>	1	<b>0</b>	22	<b>13</b>
<b>AVON:</b>	0	<b>0</b>	17	<b>15</b>	0	<b>0</b>	21	<b>15</b>
<b>AVON LAKE:</b>	0	<b>0</b>	7	<b>6</b>	0	<b>0</b>	8	<b>6</b>
<b>COMMON PLEAS:</b>	0	<b>0</b>	116	<b>76</b>	0	<b>0</b>	88	<b>76</b>
<b>DOM. RELATIONS:</b>	0	<b>0</b>	22	<b>9</b>	0	<b>0</b>	16	<b>9</b>
<b>ELYRIA:</b>	0	<b>0</b>	101	<b>127</b>	4	<b>3</b>	90	<b>130</b>
<b>GRAFTON:</b>	0	<b>0</b>	4	<b>3</b>	0	<b>0</b>	2	<b>3</b>
<b>JUV COURT:</b>	0	<b>0</b>	2	<b>1</b>	0	<b>0</b>	3	<b>1</b>
<b>LAGRANGE:</b>	0	<b>0</b>	8	<b>3</b>	0	<b>0</b>	5	<b>3</b>
<b>LORAIN:</b>	0	<b>0</b>	130	<b>117</b>	3	<b>1</b>	129	<b>118</b>
<b>METRO PARKS:</b>	0	<b>0</b>	1	<b>4</b>	0	<b>0</b>	0	<b>4</b>
<b>N. RIDGEVILLE:</b>	0	<b>0</b>	9	<b>16</b>	0	<b>0</b>	15	<b>16</b>
<b>OBERLIN:</b>	0	<b>0</b>	8	<b>3</b>	0	<b>0</b>	14	<b>3</b>
<b>OTHER:</b>	0	<b>0</b>	1	<b>0</b>	0	<b>0</b>	2	<b>0</b>
<b>SHEFFIELD LAKE:</b>	0	<b>0</b>	4	<b>4</b>	0	<b>0</b>	0	<b>4</b>
<b>SHEFFIELD VILL:</b>	0	<b>0</b>	12	<b>5</b>	2	<b>0</b>	12	<b>5</b>
<b>SOUTH AMHERST:</b>	0	<b>0</b>	0	<b>3</b>	0	<b>0</b>	1	<b>3</b>
<b>SHERIFF:</b>	0	<b>0</b>	117	<b>145</b>	0	<b>0</b>	120	<b>145</b>
<b>STATE PATROL:</b>	0	<b>0</b>	52	<b>55</b>	0	<b>0</b>	44	<b>55</b>
<b>VERMILION:</b>	0	<b>0</b>	6	<b>4</b>	2	<b>0</b>	4	<b>4</b>
<b>WELLINGTON:</b>	0	<b>0</b>	1	<b>3</b>	0	<b>0</b>	5	<b>3</b>
<b>TOTAL:</b>	0	<b>0</b>	642	<b>623</b>	12	<b>4</b>	614	<b>627</b>

## PRIOR NOVEMBER TOTALS

	Fed.	State	Ord.	Total
<b>2010:</b>	0	599	9	608
<b>2009:</b>	0	541	101	642
<b>2008:</b>	0	546	10	556
<b>2007:</b>	0	684	7	691
<b>2006:</b>	0	687	7	694
<b>2005:</b>	0	716	13	729
<b>2004:</b>	0	597	15	612
<b>2003:</b>	0	692	21	713
<b>2002:</b>	0	704	27	731
<b>2001:</b>	0	549	41	590
<b>2000:</b>	0	550	42	592



# RESIDENTS COMMITTED TO THE LORAIN COUNTY JAIL BY VARIOUS AGENCIES, COURTS AND OTHERS MONTHLY TOTALS

**DECEMBER 2012**

	FEDERAL		STATE		ORDINANCE		TOTAL	
	2010	2011	2011	2012	2011	2012	2011	2012
<b>ADULT PAR / PROB:</b>	0	0	16	15	0	0	16	15
<b>AMHERST:</b>	0	0	19	25	1	0	20	25
<b>AVON:</b>	0	0	17	16	1	2	18	18
<b>AVON LAKE:</b>	0	0	6	5	0	0	6	5
<b>COMMON PLEAS:</b>	0	0	70	67	0	0	70	67
<b>DOM. RELATIONS:</b>	0	0	12	6	0	0	12	6
<b>ELYRIA:</b>	0	0	104	124	3	14	107	138
<b>GRAFTON:</b>	0	0	1	0	0	0	1	0
<b>JUV COURT:</b>	0	0	12	2	0	0	12	2
<b>LAGRANGE:</b>	0	0	1	1	0	0	1	1
<b>LORAIN:</b>	0	0	120	90	2	9	122	99
<b>METRO PARKS:</b>	0	0	1	0	0	0	1	0
<b>N. RIDGEVILLE:</b>	0	0	21	7	1	0	22	7
<b>OBERLIN:</b>	0	0	14	5	0	1	14	6
<b>OTHER:</b>	0	0	0	3	0	0	0	3
<b>SHEFFIELD LAKE:</b>	0	0	2	3	1	0	3	3
<b>SHEFFIELD VILL:</b>	0	0	9	10	0	0	9	10
<b>SOUTH AMHERST:</b>	0	0	1	0	0	0	1	0
<b>SHERIFF:</b>	0	0	148	99	0	0	148	99
<b>STATE PATROL:</b>	0	0	46	45	0	0	46	45
<b>VERMILION:</b>	0	0	2	4	0	0	2	4
<b>WELLINGTON:</b>	0	0	5	5	0	0	5	5
<b>TOTAL:</b>	0	0	627	532	9	26	636	558

## PRIOR DECEMBER TOTALS

	Fed.	State	Ord.	Total
<b>2010:</b>	0	504	8	512
<b>2009:</b>	0	533	4	537
<b>2008:</b>	0	566	14	580
<b>2007:</b>	0	684	7	691
<b>2006:</b>	0	687	7	694
<b>2005:</b>	0	716	13	729
<b>2004:</b>	0	597	15	612
<b>2003:</b>	0	692	21	713
<b>2002:</b>	0	704	27	731
<b>2001:</b>	0	549	41	590
<b>2000:</b>	0	550	42	592



# RESIDENTS COMMITTED TO THE LORAIN COUNTY JAIL BY VARIOUS AGENCIES, COURTS AND OTHERS YEARLY TOTALS

**2012**

	FEDERAL		STATE		ORDINANCE		TOTAL	
	2011	2012	2011	2012	2011	2012	2011	2012
<b>ADULT PAR / PROB:</b>	0	0	170	<b>166</b>	0	<b>0</b>	170	<b>166</b>
<b>AMHERST:</b>	0	0	287	<b>261</b>	6	<b>5</b>	293	<b>266</b>
<b>AVON:</b>	0	0	213	<b>217</b>	4	<b>5</b>	217	<b>222</b>
<b>AVON LAKE:</b>	0	0	97	<b>88</b>	0	<b>1</b>	97	<b>89</b>
<b>COMMON PLEAS:</b>	0	0	1,253	<b>782</b>	0	<b>0</b>	1,253	<b>782</b>
<b>DOM. RELATIONS:</b>	0	0	151	<b>128</b>	0	<b>0</b>	151	<b>128</b>
<b>ELYRIA:</b>	0	0	1,229	<b>1,523</b>	32	<b>71</b>	1,261	<b>1,594</b>
<b>GRAFTON:</b>	0	0	33	<b>27</b>	1	<b>3</b>	34	<b>30</b>
<b>JUV COURT:</b>	0	0	57	<b>30</b>	0	<b>0</b>	57	<b>30</b>
<b>LAGRANGE:</b>	0	0	48	<b>56</b>	0	<b>1</b>	48	<b>57</b>
<b>LORAIN:</b>	0	0	1,440	<b>1,451</b>	112	<b>75</b>	1,552	<b>1,526</b>
<b>METRO PARKS:</b>	0	0	14	<b>38</b>	0	<b>0</b>	14	<b>38</b>
<b>N. RIDGEVILLE:</b>	0	0	175	<b>168</b>	1	<b>3</b>	176	<b>171</b>
<b>OBERLIN:</b>	0	0	159	<b>100</b>	0	<b>1</b>	159	<b>101</b>
<b>OTHER:</b>	0	0	15	<b>8</b>	0	<b>0</b>	15	<b>8</b>
<b>SHEFFIELD LAKE:</b>	0	0	41	<b>41</b>	1	<b>1</b>	42	<b>42</b>
<b>SHEFFIELD VILL:</b>	0	0	123	<b>117</b>	12	<b>17</b>	135	<b>134</b>
<b>SOUTH AMHERST:</b>	0	0	9	<b>11</b>	0	<b>0</b>	9	<b>11</b>
<b>SHERIFF:</b>	0	0	1,260	<b>1,785</b>	0	<b>0</b>	1,260	<b>1,785</b>
<b>STATE PATROL:</b>	0	0	516	<b>676</b>	0	<b>0</b>	516	<b>676</b>
<b>VERMILION:</b>	0	0	45	<b>44</b>	14	<b>2</b>	59	<b>46</b>
<b>WELLINGTON:</b>	0	0	82	<b>62</b>	0	<b>0</b>	82	<b>62</b>
<b>TOTAL:</b>	0	<b>0</b>	7,417	<b>7,779</b>	183	<b>185</b>	7,600	<b>7,964</b>

## PRIOR YEARLY TOTALS

	Fed.	State	Ord.	Total
<b>2010:</b>	0	7,386	122	<b>7508</b>
<b>2009:</b>	0	7,772	107	<b>7,879</b>
<b>2008:</b>	0	7,977	118	<b>8,095</b>
<b>2007:</b>	0	8,059	123	<b>8,183</b>
<b>2006:</b>	0	8,527	85	<b>8,612</b>
<b>2005:</b>	0	8,527	93	<b>8,621</b>
<b>2004:</b>	0	8,093	125	<b>8,218</b>
<b>2003:</b>	0	7,674	202	<b>7,885</b>
<b>2002:</b>	0	7,599	227	<b>7,839</b>
<b>2001:</b>	0	7,044	477	<b>7,525</b>





## MONTHLY SUMMARY OF INMATE RELEASES

2012

	<b>BOND POST.</b>	<b>TIME SER.</b>	<b>STATE INST.</b>	<b>PROB. GRANT.</b>	<b>SENT. SUS.</b>	<b>NO PROS.</b>	<b>OTH. AGE.</b>	<b>COURT ORD.</b>	<b>TOTAL</b>
<b>JANUARY:</b>	344	124	37	0	0	0	36	89	<b>630</b>
<b>FEBRUARY:</b>	361	111	39	1	1	0	36	108	<b>657</b>
<b>MARCH:</b>	399	144	44	1	1	0	32	113	<b>734</b>
<b>APRIL:</b>	358	124	23	0	0	0	29	90	<b>624</b>
<b>MAY:</b>	345	148	47	1	0	0	25	89	<b>655</b>
<b>JUNE:</b>	403	113	41	0	0	0	32	126	<b>715</b>
<b>JULY:</b>	388	136	57	0	0	0	30	112	<b>723</b>
<b>AUGUST:</b>	366	153	49	1	0	0	28	96	<b>693</b>
<b>SEPTEMBER:</b>	352	154	23	0	0	1	35	118	<b>683</b>
<b>OCTOBER:</b>	341	137	58	0	0	0	31	96	<b>663</b>
<b>NOVEMBER:</b>	321	125	41	0	0	0	16	90	<b>593</b>
<b>DECEMBER:</b>	310	119	35	0	0	1	27	98	<b>590</b>
<b>TOTAL:</b>	<b>4288</b>	<b>1588</b>	<b>494</b>	<b>4</b>	<b>2</b>	<b>2</b>	<b>357</b>	<b>1225</b>	<b>7960</b>

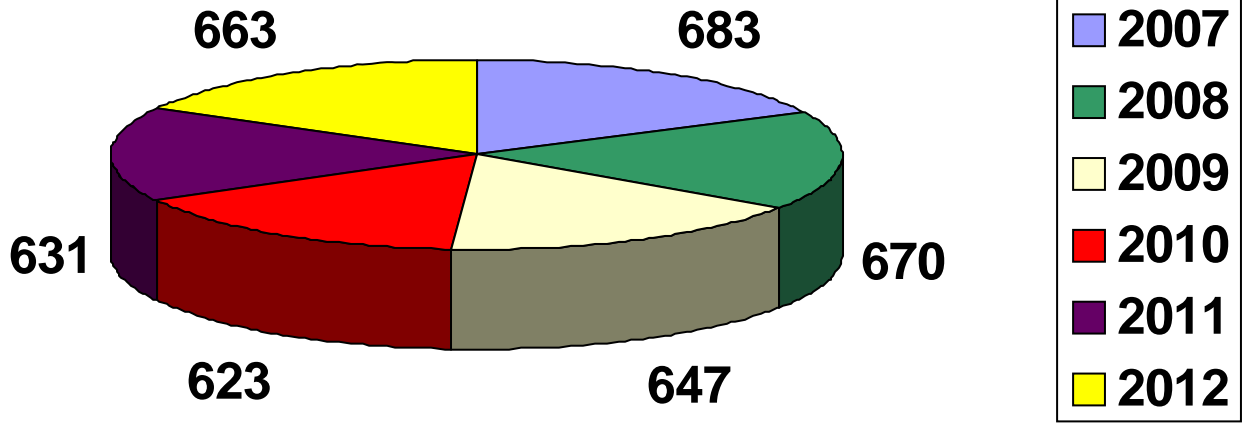
## PRIOR YEARLY SUMMARY OF INMATE RELEASES

	<b>BOND POST.</b>	<b>TIME SERVED</b>	<b>STATE INST.</b>	<b>PROB. GRANT</b>	<b>SENT. SUS.</b>	<b>NO PROS.</b>	<b>OTH. AGENCY</b>	<b>COURT ORD.</b>	<b>TOTAL</b>
<b>2011:</b>	3,991	1,553	570	3	1	8	397	1,046	<b>7,569</b>
<b>2010:</b>	3,797	1,530	698	2	0	3	354	1,095	<b>7,479</b>
<b>2009:</b>	3,545	1,758	786	6	2	4	326	1,331	<b>7,758</b>
<b>2008:</b>	3,671	1,851	883	4	3	24	331	1,278	<b>8,045</b>
<b>2007:</b>	3,794	1,645	1,005	7	0	5	498	1,250	<b>8,204</b>
<b>2006:</b>	3,788	1,719	1,102	9	7	22	516	1,140	<b>8,303</b>
<b>2005:</b>	4,262	1,572	966	12	2	9	501	1,158	<b>8,482</b>
<b>2004:</b>	3,636	1,628	1,037	15	1	16	641	1,147	<b>8,121</b>
<b>2003:</b>	3,301	1,796	1,135	56	3	24	493	1,110	<b>7,918</b>
<b>2002:</b>	3,193	1,895	1,091	68	1	38	394	1,102	<b>7,782</b>
<b>2001:</b>	3,147	1,531	1,024	30	4	43	576	1,165	<b>7,520</b>
<b>2000:</b>	2,729	1,541	1,047	36	14	23	317	1,084	<b>6,791</b>



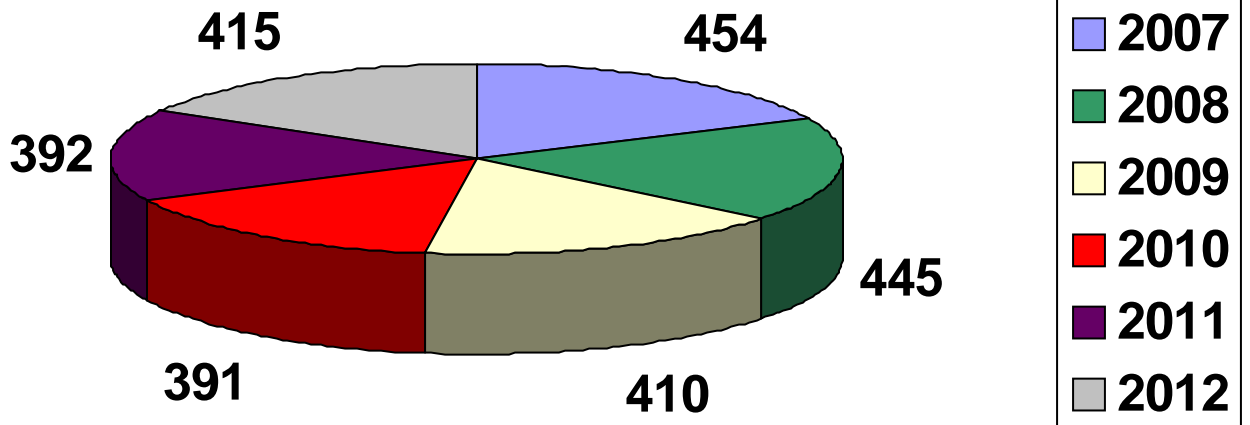
# AVERAGE YEARLY INMATE RELEASE CHART

2007	2008	2009	2010	2011	2012
683	670	647	623	631	663



# YEARLY AVERAGE JAIL DAILY POPULATION CHART

2007	2008	2009	2010	2011	2012
454	445	410	391	392	415



## SUMMARY OF INMATE CHARGES

2012

	<b>FELONY</b>	<b>MISD.</b>	<b>PAR. PROB.</b>
<b>JANUARY:</b>	257	393	8
<b>FEBRUARY:</b>	271	379	7
<b>MARCH:</b>	297	402	9
<b>APRIL:</b>	247	374	4
<b>MAY:</b>	293	395	9
<b>JUNE:</b>	286	411	6
<b>JULY:</b>	289	425	7
<b>AUGUST:</b>	239	425	9
<b>SEPTEMBER:</b>	262	425	6
<b>OCTOBER:</b>	247	392	5
<b>NOVEMBER:</b>	263	361	3
<b>DECEMBER:</b>	231	322	5
<b>TOTAL:</b>	<b>3,182</b>	<b>4,704</b>	<b>78</b>

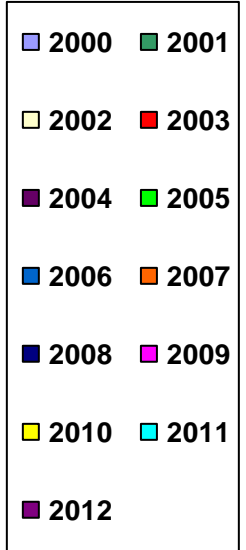
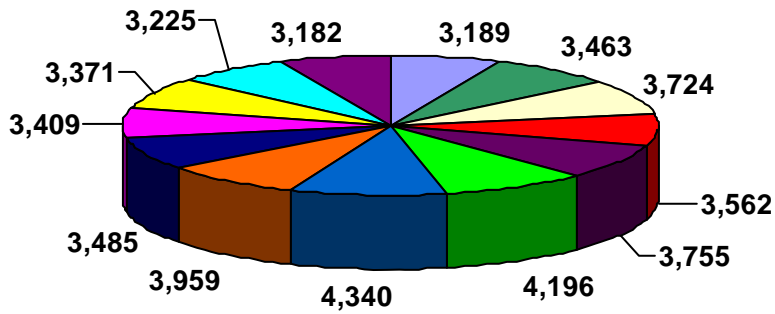


## PRIOR YEARLY TOTALS

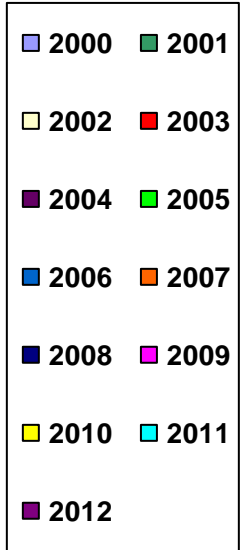
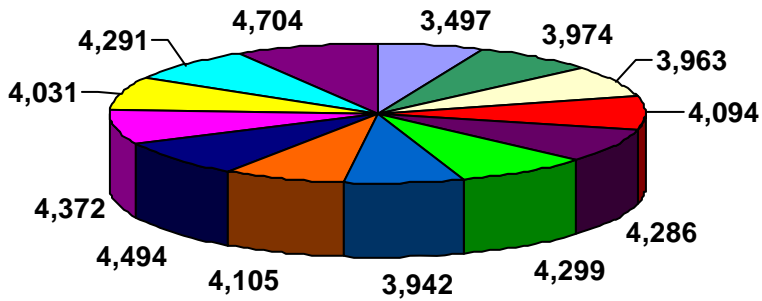
	<b>FELONY</b>	<b>MISD.</b>	<b>PAR. PROB.</b>
<b>2011:</b>	3,225	4,291	84
<b>2010:</b>	3,371	4,031	106
<b>2009:</b>	3,409	4,372	98
<b>2008:</b>	3,485	4,494	116
<b>2007:</b>	3,959	4,105	121
<b>2006:</b>	4,340	3,942	92
<b>2005:</b>	4,196	4,299	126
<b>2004:</b>	3,755	4,286	177
<b>2003:</b>	3,562	4,094	239
<b>2002:</b>	3,724	3,963	152
<b>2001:</b>	3,463	3,974	91
<b>2000:</b>	3,189	3,497	54

# INMATE CHARGES COMPARISON CHARTS

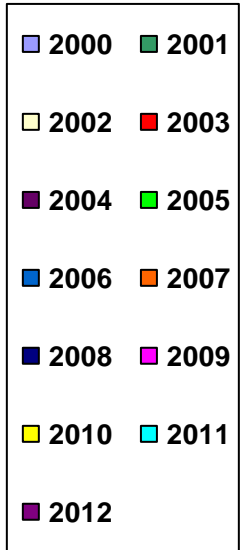
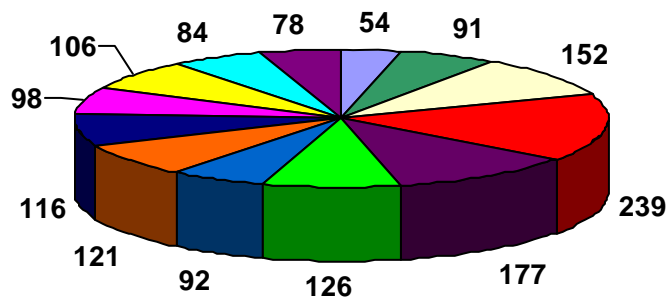
## FELONIES



## MISDEMEANORS



## PAROLE / PROBATION



## ETHNIC ORIGIN OF INMATES

2012				AMER.	ASIAN /
	WHITE	BLACK	HISPANIC	INDIAN	ORIENTAL
JANUARY:	391	218	47	1	1
FEBRUARY:	376	217	61	0	2
MARCH:	406	249	53	0	0
APRIL:	376	201	48	0	0
MAY:	405	243	49	1	0
JUNE:	419	237	47	0	0
JULY:	391	246	84	0	0
AUGUST:	408	203	62	0	0
SEPTEMBER:	405	241	46	0	1
OCTOBER:	366	225	52	0	1
NOVEMBER:	374	219	34	0	0
DECEMBER:	336	184	37	0	1
<b>TOTAL:</b>	<b>4653</b>	<b>2683</b>	<b>620</b>	<b>2</b>	<b>6</b>

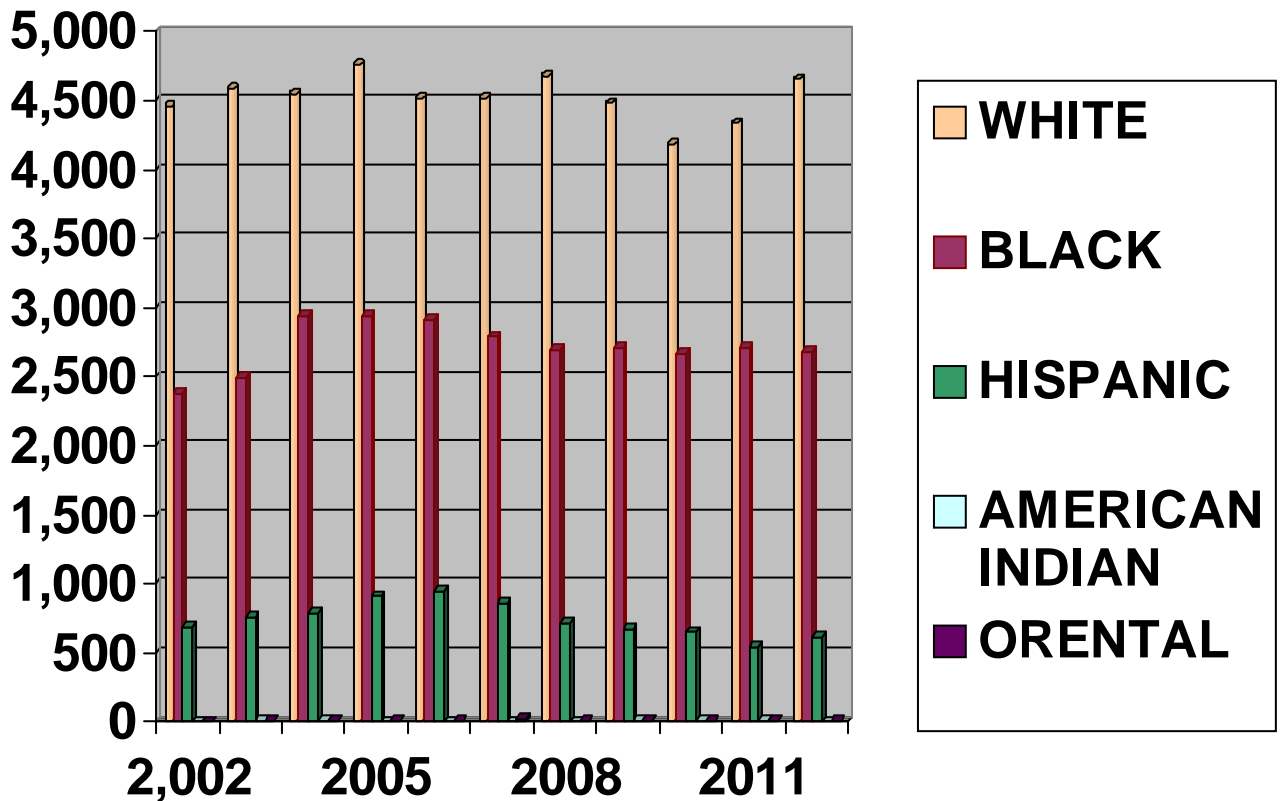
## PRIOR TOTALS

				AMER.	ASIAN /
	WHITE	BLACK	HISPANIC	INDIAN	ORIENTAL
2011:	4334	2714	540	6	6
2010:	4179	2661	652	5	11
2009:	4478	2712	674	5	10
2008:	4674	2700	715	1	5
2007:	4515	2790	861	0	19
2006:	4511	2907	943	2	11
2005:	4758	2943	913	0	7
2004:	4548	2537	788	6	6
2003:	4586	2490	755	4	4
2002:	4454	2377	690	3	1



## ETHNIC ORIGIN OF INMATES CHART

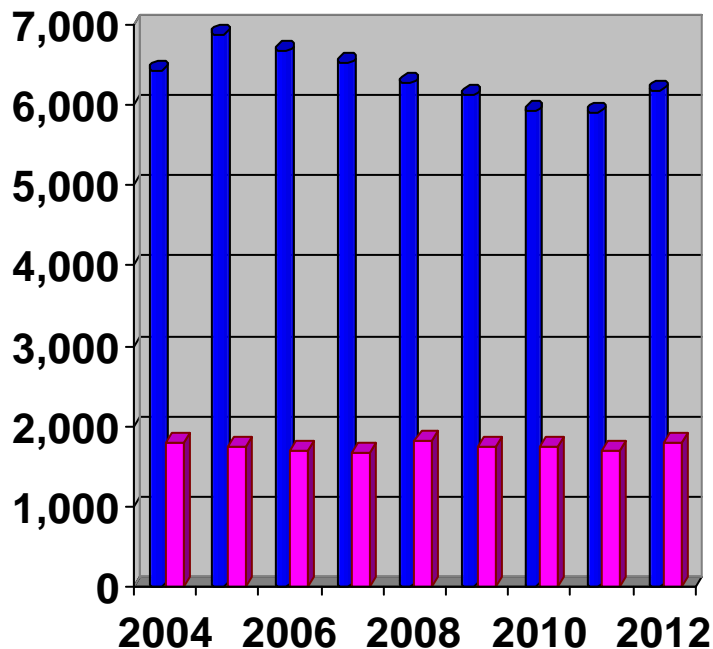
	2004	2005	2006	2007	2008	2009	2010	2011	2012
<b>WHITE:</b>	4,548	4,758	4,511	4,515	4,674	4,478	4,179	4,334	<b>4653</b>
<b>BLACK:</b>	2,537	2,943	2,907	2,790	2,700	2,712	2,661	2,714	<b>2683</b>
<b>HISPANIC:</b>	788	913	943	861	715	674	652	540	<b>620</b>
<b>AM. INDIAN:</b>	6	0	2	0	1	5	5	6	<b>2</b>
<b>ASIAN / OR:</b>	6	7	11	19	5	10	11	6	<b>6</b>



## SUMMARY OF INMATE GENDER

2012	MALE	FEMALE
JANUARY:	524	134
FEBRUARY:	501	156
MARCH:	554	154
APRIL:	479	146
MAY:	530	167
JUNE:	542	161
JULY:	548	173
AUGUST:	522	151
SEPTEMBER:	549	144
OCTOBER:	514	130
NOVEMBER:	487	140
DECEMBER:	430	128
<b>TOTAL:</b>	<b>6,180</b>	<b>1,784</b>

	2004	2005	2006	2007	2008	2009	2010	2011	2012
<b>MALE</b>	6,431	6,878	6,670	6,523	6,276	6,126	5925	5911	6180
<b>FEMALE</b>	1,787	1,743	1,704	1,662	1,819	1,753	1753	1689	1784



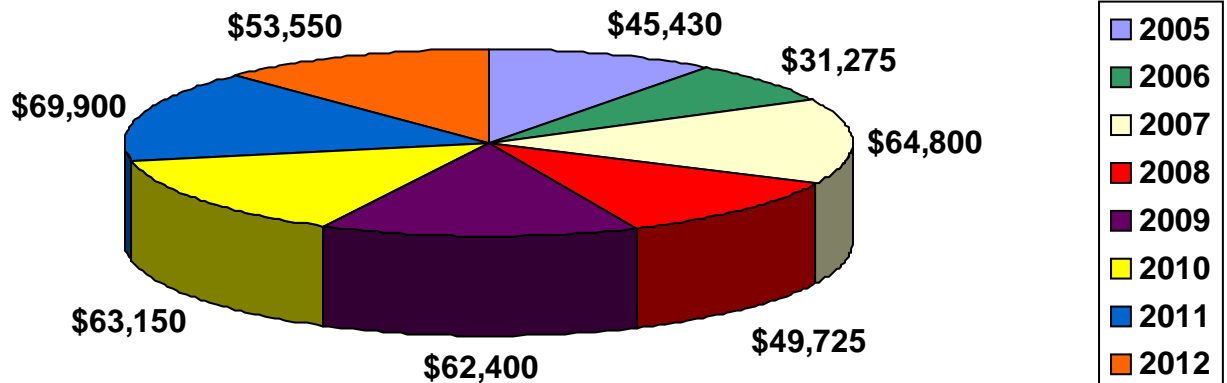


## MONTHLY ORDINANCE FEES

	2006	2007	2008	2009	2010	2011	2012
<b>JANUARY:</b>	\$3,975	\$3,450	\$5,025	\$3,900	\$8,700	\$7,275	<b>\$4,575</b>
<b>FEBRUARY:</b>	\$1,725	\$1,875	\$5,325	\$2,100	\$10,425	\$5,175	<b>\$6,675</b>
<b>MARCH:</b>	\$3,600	\$6,525	\$5,850	\$6,975	\$5,400	\$3,450	<b>\$2,325</b>
<b>APRIL:</b>	\$750	\$7,350	\$2,400	\$1,275	\$5,025	\$5,475	<b>\$3,975</b>
<b>MAY:</b>	\$4,125	\$6,375	\$5,625	\$2,325	\$3,525	\$6,225	<b>\$4,875</b>
<b>JUNE:</b>	\$1,275	\$5,250	\$3,525	\$10,050	\$4,950	\$4,650	<b>\$2,325</b>
<b>JULY:</b>	\$3,375	\$2,850	\$2,925	\$10,950	\$2,475	\$6,900	<b>\$2,475</b>
<b>AUGUST:</b>	\$5,775	\$2,325	\$3,375	\$2,025	\$6,225	\$8,175	<b>\$4,950</b>
<b>SEPTEMBER:</b>	\$3,450	\$7,800	\$3,825	\$3,675	\$8,175	\$6,150	<b>\$4,575</b>
<b>OCTOBER:</b>	\$675	\$9,300	\$5,175	\$4,800	\$2,625	\$5,100	<b>\$5,025</b>
<b>NOVEMBER:</b>	\$750	\$5,025	\$3,000	\$4,350	\$2,400	\$6,450	<b>\$3,450</b>
<b>DECEMBER:</b>	\$1,800	\$6,675	\$3,675	\$9,975	\$3,225	\$4,875	<b>\$8,325</b>
<b>TOTAL</b>	<b>\$31,275</b>	<b>\$64,800</b>	<b>\$49,725</b>	<b>\$62,400</b>	<b>\$63,150</b>	<b>\$69,900</b>	<b>\$53,550</b>

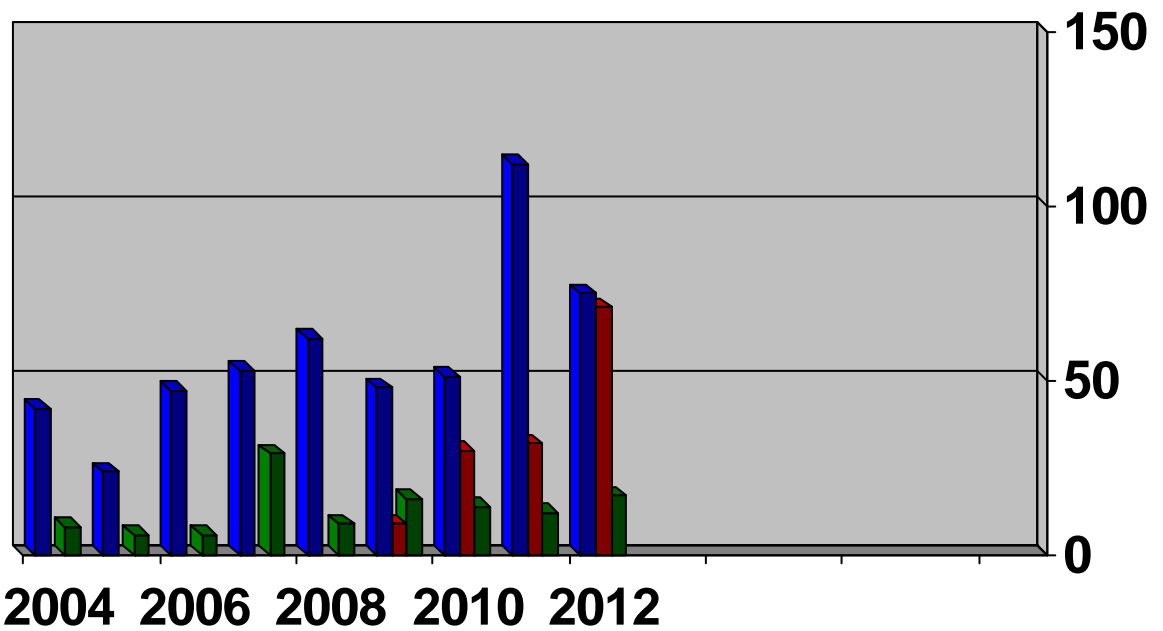


## ORDINANCE FEES GENERATED CHART



# THREE HIGHEST CONTRIBUTORS OF ORDINANCE CHART

	2110	2011	2012
LORAIN POLICE:	51	112	75
ELYRIA POLICE:	30	32	71
SHEFFIELD POLICE:	14	12	17



## FACILITY MEDICAL ACTIONS

2012

	MED. PASS	PHY. EXAM	SICK CALL	FAC. DENT	FAC. DOC.	MEDS	OTC	ADD ORDERS	ADMIT HOSP	TEST OUT FAC.	TEST IN FAC.	TO E.R.
JAN.	604	91	345	19	282	21,533	3,386	904	0	19	7,804	1
FEB.	579	111	355	20	246	21,547	2,837	957	2	29	7,874	3
MAR.	636	98	352	12	229	22,046	3,010	983	1	30	7,598	4
APR.	574	101	307	14	231	16,981	3,597	836	0	19	7,629	2
MAY	640	122	320	15	207	16,020	3,345	860	1	31	7,586	1
JUN.	646	101	320	9	230	17,534	3,152	903	1	26	7,609	2
JUL.	642	99	326	10	227	19,572	3,463	911	0	24	7,727	3
AUG.	609	110	308	11	270	18,652	4,701	915	2	22	7,708	3
SEPT.	636	82	321	7	219	18,676	3,858	892	0	14	7,691	0
OCT.	590	91	334	17	185	18,077	4,340	971	0	25	8,203	0
NOV.	562	73	343	16	225	20,223	4,686	909	2	25	8,342	5
DEC.	502	92	357	15	171	18,948	5,038	804	1	24	9,175	4
<b>TOTAL</b>	<b>7,220</b>	<b>1,171</b>	<b>3,988</b>	<b>165</b>	<b>2,722</b>	<b>229,809</b>	<b>45,413</b>	<b>10,845</b>	<b>10</b>	<b>288</b>	<b>94,946</b>	<b>28</b>



## FACILITY MENTAL HEALTH ACTIONS

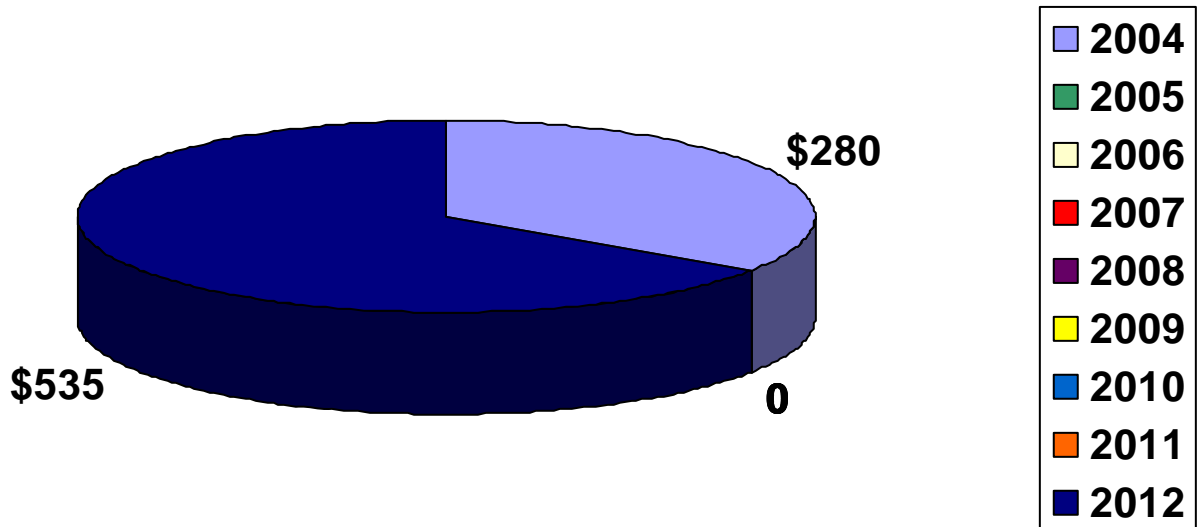
	IND. COUNS.	ASSESS.	THIRIP. REST.	PSYCH.	COURT EVAL.	NORD EVAL	ADMIT NCBH	CRIS. INTER.	PSYCHI
JAN.	751	417	4	263	4	0	0	19	31
FEB.	624	359	4	184	0	0	0	7	37
MAR.	704	375	16	144	1	1	2	13	35
APR.	608	346	12	206	1	1	0	13	33
MAY	677	413	11	234	1	0	1	8	37
JUN.	714	340	12	186	1	0	0	8	24
JUL.	760	399	11	273	2	2	0	12	13
AUG.	728	363	11	197	3	1	2	7	36
SEPT.	740	383	8	283	1	0	0	7	26
OCT.	763	366	8	219	3	0	0	11	28
NOV.	686	406	4	273	2	0	1	10	36
DEC.	593	340	6	242	0	0	0	8	28
<b>TOTAL</b>	<b>8,348</b>	<b>4,507</b>	<b>107</b>	<b>2,704</b>	<b>19</b>	<b>5</b>	<b>6</b>	<b>123</b>	<b>364</b>

## INMATE MEDICAL CO-PAY CHART

Per the Ohio Revised Code sentenced inmates can be charged a moderate fee for medical services rendered to help defray the cost of medical care.

It should be noted that the decrease in medical co-pay is contributed to an elimination of certain fees that are not chargeable to inmates per the National Commission on Health Care Standards.

2004	2005	2006	2007	2008	2009	2010	2011	2012
\$280	0	0	0	0	0	0	0	\$535



## SUMMARY OF YEARLY JAIL REPORTS

	2007	2008	2009	2010	2011	2012
ASSAULT ON INMATE:	19	13	14	21	24	36
ASSAULT ON STAFF:	7	5	9	30	14	23
ATTEMPTED ASSAULT ON STAFF:						10
ATTEMPTED SELF HARM:					17	19
ATTEMPTED SUICIDE:	4	11	4	1	7	7
CREATING A DISTURBANCE:					27	47
DAMAGING PROPERTY:					3	5
DISRESPECTING STAFF:					25	44
DISRUPTING OPERATIONS:					75	53
ESCAPE RISK ADDITION:	81	63	100	104	144	112
FACILITY EVACUATION DRILL:				7	8	11
FACILITY INSPECTION:				44	58	78
FACILITY SEARCH:	692	772	980	1050	1102	1145
FAILURE TO COMPLY:					102	111
FIGHTING:	40	34	29	62	58	70
IN CUSTODY DEATH:					1	0
INMATE ADMIN SEG:	101	101	100	89	149	113
INMATE INJURY:	86	69	67	63	71	27
INMATE LOG:	804	821	775	604	598	631
INTIMIDATION:					3	3
K9 DEPLOYMENT:					5	2
K9 SEARCH:				9	233	108
KEY CHECK:	45	48	51	41	50	52
KICKING & POUND. ON CELL:					23	14
MEDICAL TRANSPORT:					13	14
MISUSE OF MEDICATION:					5	4
OFFICER INJURY:	24	15	10	19	9	12
OTHER / MISCELLANEOUS:	287	236	236	630	177	284
PHYS. CONT. WITH AN OFFICER:					5	5
PHYS. CONT. WITH AN INMATE:					1	3
POSSESSION CONTRABAND:					51	56
SECURITY RISK INMATE:						6
SELF MUTILATION /TATTOO'S:					7	0
SMOKING:					7	7
STARTING FIRES:					5	4
STEALING:					10	22
THREAT. STAFF / INMATE:					38	32
<b>TOTAL:</b>	<b>2190</b>	<b>2188</b>	<b>2375</b>	<b>2774</b>	<b>3125</b>	<b>3170</b>

### Jail Report Highlights

In 2012 assaults on inmates (from other inmates) increased from 24 to 36. Assaults on Jail Staff increased from 14 to 23. The jail had 19 inmates attempt self harm and 7 attempted suicides. Inmate logs increased from 598 to 631. Total reports increased from 3,125 in 2011 to 3,170 in 2012.



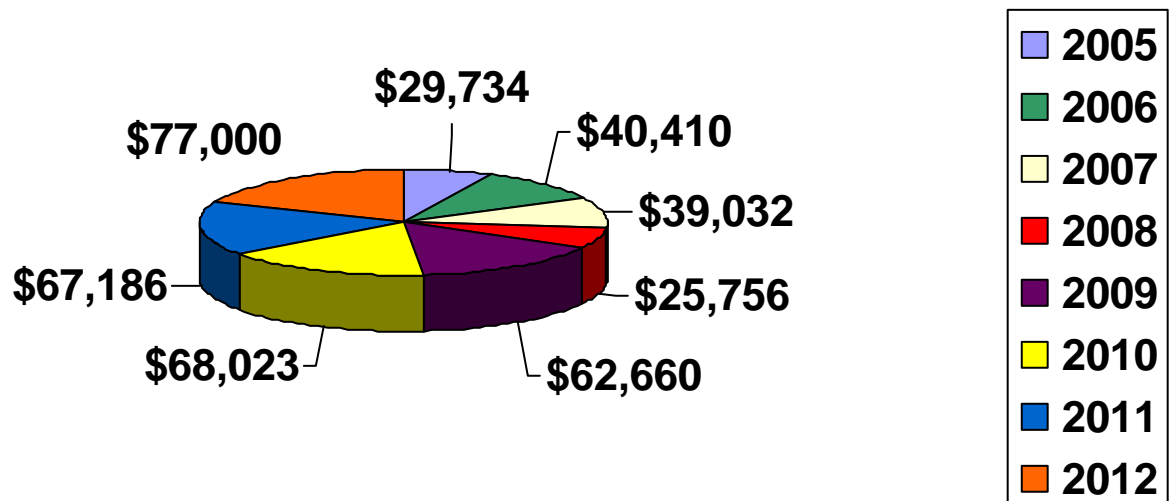
## YEARLY INMATE COMMISSARY CHART

The Lorain County Sheriff's Office has contracted ARAMARK Food Services to provide commissary to the inmate population. Inmates are permitted to purchase hygiene, writing, food items and other approved products. The Sheriff's Office earns 22% commission of the total items purchased weekly.

Per the Ohio Revised Code profits forwarded to the Lorain County Sheriff's Office must be placed into a special inmate welfare and recreational account. Expenditures from the inmate welfare and recreational account may only be allocated for items that solely and directly benefit the inmate population.

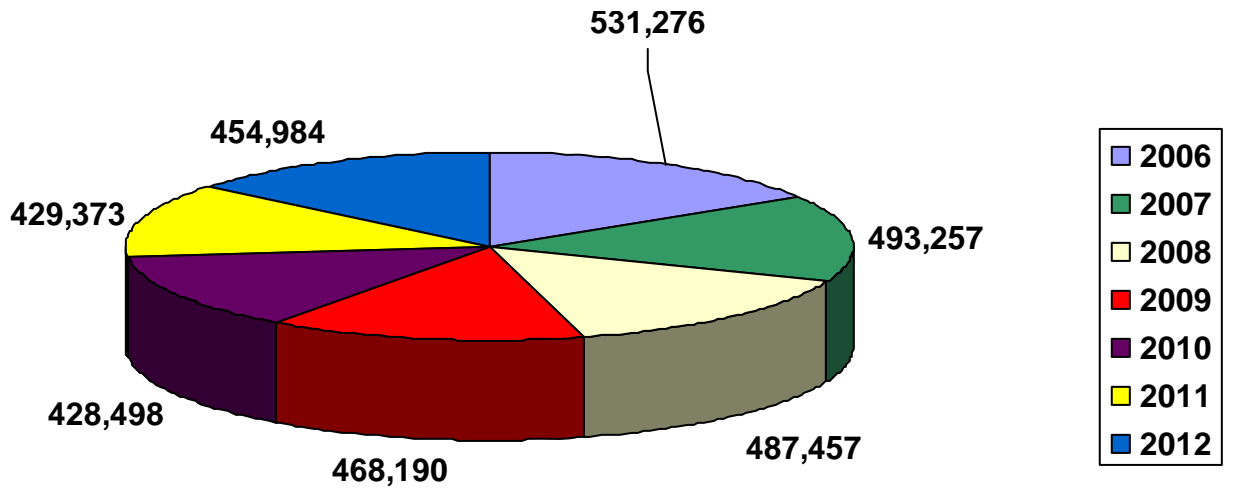
Items routinely purchased from this account include: Televisions, exercise equipment, recreational equipment, hair clippers and educational aids.

2005	2006	2007	2008	2009	2010	2011	2012
29,734	\$40,410	\$39,032	\$25,756	\$62,660	\$68,023	\$67,186	77,000



# INMATE MEALS SERVED CHART

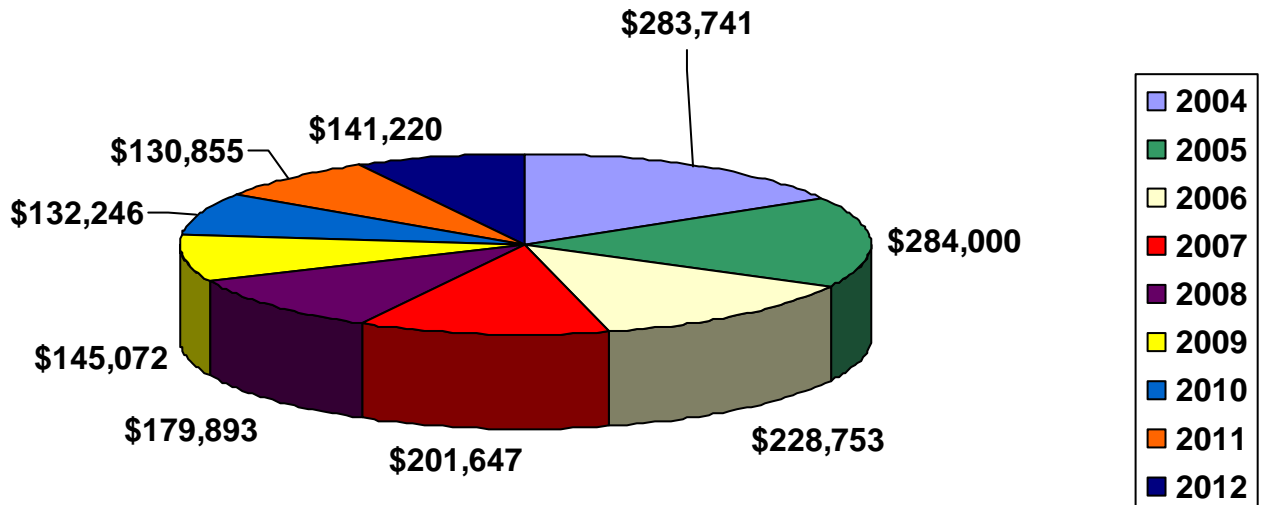
2006	2007	2008	2009	2010	2011	2012
531,276	493,257	487,457	468,190	428,498	429,373	454,984



## INMATE TELEPHONE SYSTEM

Calls, Minutes, Revenue, and Commission Paid to the Lorain County  
General Fund

2012	TOTAL	TOTAL	REVENUE	COMMISSION
	CALLS	MINUTES		
JANUARY:	3,793	39,249	\$22,631.39	\$13,578.83
FEBRUARY:	4,374	31,141	\$18,636.29	\$11,182.37
MARCH:	4,335	33,246	\$19,588.47	\$11,735.08
APRIL:	3,036	27,704	\$17,018.98	\$10,211.39
MAY:	3,592	27,318	\$16,802.40	\$10,081.44
JUNE:	4,077	27,683	\$17,524.80	\$10,514.88
JULY:	2,998	38,394	\$23,670.09	\$14,202.05
AUGUST:	2,719	35,709	\$20,754.26	\$12,452.56
SEPTEMBER:	2,765	31,139	\$18,190.64	\$10,914.38
OCTOBER:	3,322	44,436	\$25,799.98	\$15,479.99
NOVEMBER:	3,120	43,945	\$25,059.95	\$11,026.38
DECEMBER:	3,676	37,342	\$22,365.62	\$9,840.87
<b>TOTAL:</b>	<b>41,807</b>	<b>417,306</b>	<b>\$248,042.87</b>	<b>\$141,220.22</b>





## INMATE PROGRAMS

	<b>2006</b>	<b>2007</b>	<b>2008</b>	<b>2009</b>	<b>2010</b>	<b>2011</b>	<b>2012</b>
<b>STRESS &amp; ANGER:</b>	416	185	185	304	478	259	<b>338</b>
<b>LACADA - FEMALES:</b>	1,352	1,540	1,540	2,033	2,002	1,847	<b>1,784</b>
<b>LACADA - MALES:</b>	734	976	976	945	2,236	1,822	<b>1,956</b>
<b>SPEC. NEED STEP DOWN:</b>	NA	NA	NA	NA	NA	NA	<b>184</b>
<b>AA MALES:</b>	NA	NA	NA	NA	NA	NA	<b>1,264</b>
<b>AA FEMALES:</b>	NA	NA	NA	NA	NA	NA	<b>211</b>
<b>NA FEMALE :</b>	NA	NA	NA	NA	NA	NA	<b>308</b>
<b>CHURCH - MALES:</b>	3,722	3,652	3,652	3,652	3,690	3,688	<b>1,840</b>
<b>TOTAL:</b>	<b>6,224</b>	<b>6,353</b>	<b>6,353</b>	<b>6,934</b>	<b>8,406</b>	<b>7,616</b>	<b>7,885</b>



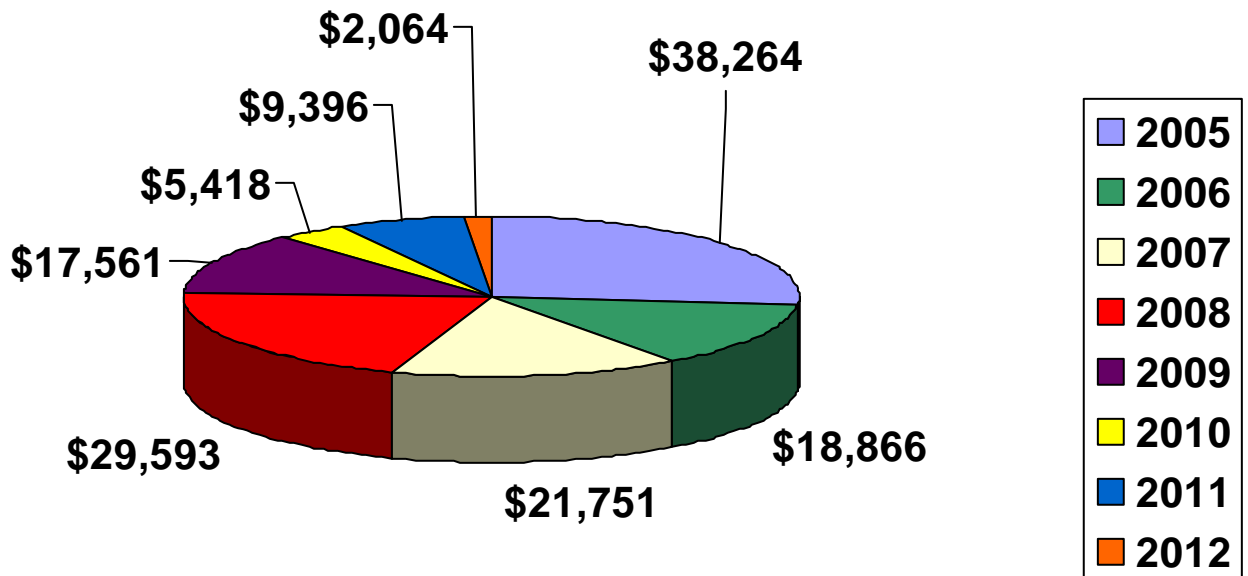
## INMATE WORK RELEASE CHART

Inmates sentenced to the work release program are permitted to maintain their employment by being allowed to leave the facility for scheduled work. Inmates are randomly checked by jail staff to assure they are at their place of employment .

Inmates who are accepted into the work release program are required to pay one hours wage per day to the Lorain County Sheriff's Office to help defray the cost of their incarceration.

Per the Ohio Revised Code any monies collected are placed into the Lorain County General Fund.

2005	2006	2007	2008	2009	2010	2011	2012
\$38,264	\$18,866	\$21,751	\$29,593	\$17,561	\$5,418	\$9,396	\$2,064



# VISITATION

	INMATES		VISITORS	
	2011	2012	2011	2012
<b>JANUARY:</b>	893	<b>996</b>	1,120	<b>1,322</b>
<b>FEBRUARY:</b>	755	<b>891</b>	1,015	<b>1,175</b>
<b>MARCH:</b>	834	<b>993</b>	1,129	<b>1,338</b>
<b>APRIL:</b>	856	<b>902</b>	1,187	<b>1,167</b>
<b>MAY:</b>	906	<b>1,065</b>	1,259	<b>1,410</b>
<b>JUNE:</b>	583	<b>1,023</b>	727	<b>1,377</b>
<b>JULY:</b>	912	<b>1,048</b>	1,217	<b>1,403</b>
<b>AUGUST:</b>	1,018	<b>956</b>	1,377	<b>1,360</b>
<b>SEPTEMBER:</b>	989	<b>954</b>	1,340	<b>1,322</b>
<b>OCTOBER:</b>	966	<b>1,038</b>	1,264	<b>1,384</b>
<b>NOVEMBER:</b>	1,020	<b>1,030</b>	1,353	<b>1,392</b>
<b>DECEMBER:</b>	1,001	<b>1,027</b>	1,341	<b>1,411</b>
<b>TOTAL</b>	<b>10,733</b>	<b>11,923</b>	<b>14,329</b>	<b>16,061</b>

## VISITATION CHART

